

## Summary

<b>Production Name</b>	Claudin 4 Rabbit Polyclonal Antibody
<b>Description</b>	Primary antibody
<b>Host</b>	Rabbit
<b>Application</b>	WB,IHC-F,IHC-P,ICC/IF,ELISA
<b>Reactivity</b>	Human,Mouse,Rat

## Performance

<b>Conjugation</b>	Unconjugated
<b>Modification</b>	Unmodified
<b>Isotype</b>	IgG
<b>Clonality</b>	Polyclonal Antibody
<b>Form</b>	Liquid
<b>Storage</b>	Store at 4°C short term. Aliquot and store at -20°C long term. Avoid freeze/thaw cycles.
<b>Buffer</b>	Liquid in PBS containing 50% glycerol, 0.5% BSA and 0.02% sodium azide, pH 7.3.
<b>Purification</b>	Affinity Chromatography

## Immunogen

<b>Gene Name</b>	CLDN4
<b>Alternative Names</b>	CLDN4; CPER; CPETR1; WBSCR8; Claudin-4; Clostridium perfringens enterotoxin receptor; CPE-R; CPE-receptor; Williams-Beuren syndrome chromosomal region 8 protein
<b>Gene ID</b>	1364
<b>SwissProt ID</b>	O14493

## Application

<b>Dilution Ratio</b>	WB: 1/500-1/1000 IHC: 1/50-1/100 IF: 1/50-1/200 ELISA: 1/10000
<b>Molecular Weight</b>	Calculated MW: 22 kDa; Observed MW: 22 kDa

**Product Name: Claudin 4 Rabbit Polyclonal Antibody**  
**Catalog #: APRab00396**



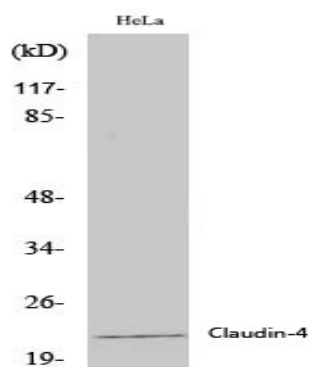
## Background

Plays a major role in tight junction-specific obliteration of the intercellular space.

## Research Area

Cell Biology

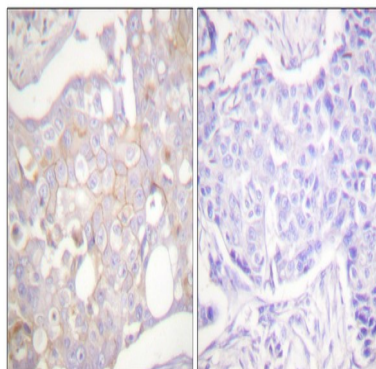
## Image Data



Western blot analysis of Claudin 4 in various lysates using Claudin 4 antibody.

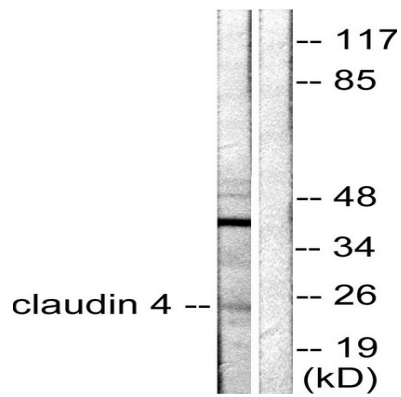


Western blot analysis of Claudin 4 in HeLa lysates using Claudin4 antibody.



Immunohistochemistry analysis of paraffin-embedded Human breast carcinoma tissue using Claudin 4 antibody. High-pressure and temperature Sodium Citrate pH 6.0 was used for antigen retrieval.

**Product Name: Claudin 4 Rabbit Polyclonal Antibody**  
**Catalog #: APRab00396**



Western blot analysis of Claudin 4 in HeLa lysates using Claudin 4 antibody. The lane on the right is blocked with the synthesized peptide.

**Note**

For research use only.