

**Product Name: kappa Actin Rabbit Polyclonal Antibody**  
**Catalog #: APRab00393**



## Summary

<b>Production Name</b>	kappa Actin Rabbit Polyclonal Antibody
<b>Description</b>	Primary antibody
<b>Host</b>	Rabbit
<b>Application</b>	WB,ELISA
<b>Reactivity</b>	Human,Mouse

## Performance

<b>Conjugation</b>	Unconjugated
<b>Modification</b>	Unmodified
<b>Isotype</b>	IgG
<b>Clonality</b>	Polyclonal Antibody
<b>Form</b>	Liquid
<b>Storage</b>	Store at 4°C short term. Aliquot and store at -20°C long term. Avoid freeze/thaw cycles.
<b>Buffer</b>	Liquid in PBS containing 50% glycerol, 0.5% BSA and 0.02% sodium azide, pH 7.3.
<b>Purification</b>	Affinity Chromatography

## Immunogen

<b>Gene Name</b>	ACTBL2
<b>Alternative Names</b>	ACT
<b>Gene ID</b>	345651
<b>SwissProt ID</b>	Q562R1

## Application

<b>Dilution Ratio</b>	WB: 1/500-1/1000 ELISA: 1/10000
<b>Molecular Weight</b>	Calculated MW: 42 kDa; Observed MW: 42 kDa

## Background

Actins are highly conserved proteins that are involved in various types of cell motility and are ubiquitously expressed in all

Product Name: kappa Actin Rabbit Polyclonal Antibody  
Catalog #: APRab00393

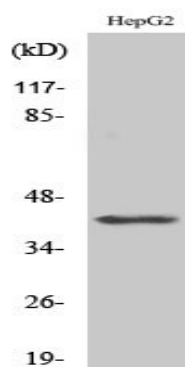


eukaryotic cells.

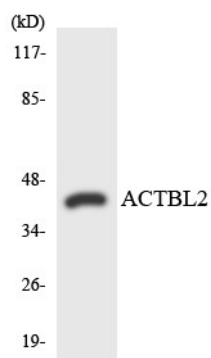
## Research Area

Tags & Cell Markers

## Image Data



Western blot analysis of kappa Actin in various lysates using kappa Actin antibody.



Western blot analysis of kappa Actin in the HUVEC lysates using ACTBL2 antibody.

## Note

For research use only.