

Product Name: PKC zeta Rabbit Polyclonal Antibody
Catalog #: APRab00384



Summary

Production Name	PKC zeta Rabbit Polyclonal Antibody
Description	Primary antibody
Host	Rabbit
Application	WB,IHC-F,IHC-P,ICC/IF,ELISA
Reactivity	Human,Mouse,Rat,Monkey

Performance

Conjugation	Unconjugated
Modification	Unmodified
Isotype	IgG
Clonality	Polyclonal Antibody
Form	Liquid
Storage	Store at 4°C short term. Aliquot and store at -20°C long term. Avoid freeze/thaw cycles.
Buffer	Liquid in PBS containing 50% glycerol, 0.5% BSA and 0.02% sodium azide, pH 7.3.
Purification	Affinity Chromatography

Immunogen

Gene Name	PRKCZ
Alternative Names	PRKCZ; PKC2; Protein kinase C zeta type; nPKC-zeta
Gene ID	5590
SwissProt ID	Q05513

Application

Dilution Ratio	WB: 1/500-1/1000 IHC: 1/50-1/100 IF: 1/50-1/200 ELISA: 1/10000
Molecular Weight	Calculated MW: 68 kDa; Observed MW: 80 kDa

Background

PKC is one of the earliest events in a cascade that controls a variety of cellular responses, including secretion, gene

Product Name: PKC zeta Rabbit Polyclonal Antibody
Catalog #: APRab00384

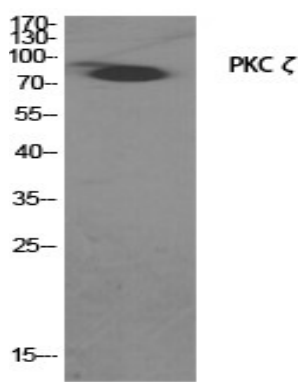


expression, proliferation, and muscle contraction. PKC is activated by diacylglycerol which in turn phosphorylates a range of cellular proteins. PKC also serves as the receptor for phorbol esters, a class of tumor promoters. Subunit of a quaternary complex that plays a central role in epithelial cell polarization.

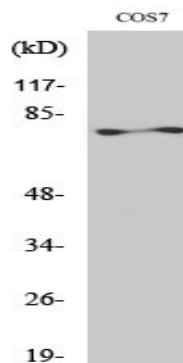
Research Area

Signal Transduction

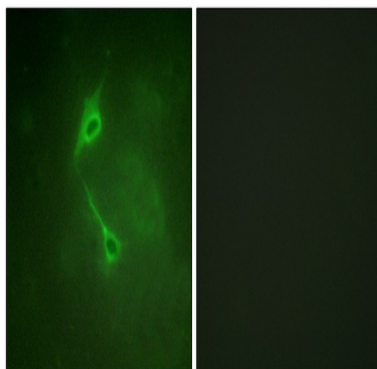
Image Data



Western blot analysis of PKC zeta in various lysates using PKC zeta antibody.



Western blot analysis of PKC zeta in COS7 lysates using PKC ζ antibody.

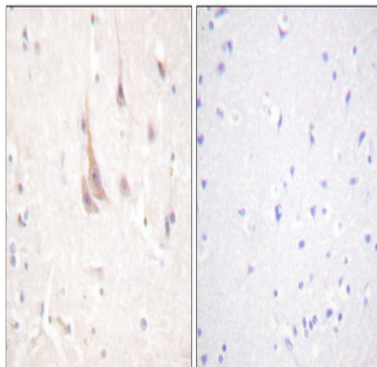


Immunofluorescence analysis of PKC zeta in NIH/3T3 cells, using PKC zeta antibody. The picture on the right is blocked with

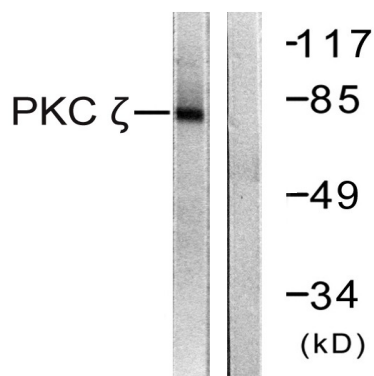
Product Name: PKC zeta Rabbit Polyclonal Antibody
Catalog #: APRab00384



the synthesized peptide.



Immunohistochemistry analysis of paraffin-embedded Human brain tissue using PKC zeta antibody. High-pressure and temperature Sodium Citrate pH 6.0 was used for antigen retrieval. Sample with blocking peptide on the right.



Western blot analysis of PKC zeta in COS7 lysates treated with PMA using PKC zeta antibody. The lane on the right is blocked with the synthesized peptide.

Note

For research use only.