

Summary

Production Name	FSHR Rabbit Polyclonal Antibody
Description	Primary antibody
Host	Rabbit
Application	WB,ICC/IF,ELISA
Reactivity	Human,Mouse,Rat

Performance

Conjugation	Unconjugated
Modification	Unmodified
Isotype	IgG
Clonality	Polyclonal Antibody
Form	Liquid
Storage	Store at 4°C short term. Aliquot and store at -20°C long term. Avoid freeze/thaw cycles.
Buffer	Liquid in PBS containing 50% glycerol, 0.5% BSA and 0.02% sodium azide, pH 7.3.
Purification	Affinity Purified

Immunogen

Gene Name	FSHR
Alternative Names	FSHR; LGR1; Follicle-stimulating hormone receptor; FSH-R; Follitropin receptor
Gene ID	2492
SwissProt ID	P23945

Application

Dilution Ratio	WB: 1/500-1/1000 IF: 1/50-1/200 ELISA: 1/10000
Molecular Weight	Calculated MW: 78 kDa; Observed MW: 78 kDa

Background

The protein encoded by this gene belongs to family 1 of G-protein coupled receptors. It is the receptor for follicle

Product Name: FSHR Rabbit Polyclonal Antibody
Catalog #: APRab00381

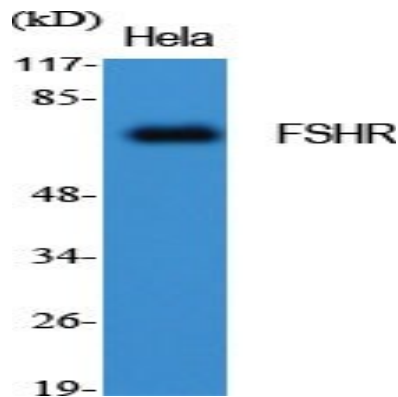


stimulating hormone and functions in gonad development. Mutations in this gene cause ovarian dysgenesis type 1, and also ovarian hyperstimulation syndrome. Alternative splicing results in multiple transcript variants.

Research Area

Neuroscience

Image Data



Western blot analysis of FSHR in HeLa lysates using FSHR antibody.

Note

For research use only.