

Summary

Production Name	Bcl6 Rabbit Polyclonal Antibody
Description	Primary antibody
Host	Rabbit
Application	WB,IHC-F,IHC-P,ICC/IF,ELISA
Reactivity	Human,Mouse,Rat

Performance

Conjugation	Unconjugated
Modification	Unmodified
Isotype	IgG
Clonality	Polyclonal Antibody
Form	Liquid
Storage	Store at 4°C short term. Aliquot and store at -20°C long term. Avoid freeze/thaw cycles.
Buffer	Liquid in PBS containing 50% glycerol, 0.5% BSA and 0.02% sodium azide, pH 7.3.
Purification	Affinity Purified

Immunogen

Gene Name	BCL6 BCL6; BCL5; LAZ3; ZBTB27; ZNF51; B-cell lymphoma 6 protein; BCL-6; B-cell lymphoma
Alternative Names	5 protein; BCL-5; Protein LAZ-3; Zinc finger and BTB domain-containing protein 27; Zinc finger protein 51
Gene ID	604
SwissProt ID	P41182

Application

Dilution Ratio	WB: 1/500-1/1000 IHC: 1/50-1/100 IF: 1/50-1/200 ELISA: 1/10000
Molecular Weight	Calculated MW: 79 kDa; Observed MW: 79 kDa

Product Name: Bcl6 Rabbit Polyclonal Antibody
Catalog #: APRab00377



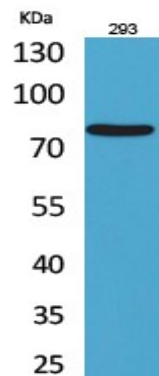
Background

Bcl-6, a transcriptional repressor, binds Stat recognition-like DNA elements and influences germinal center development and cell differentiation. Additionally, Bcl-6 negatively regulates NFκB expression, thereby inhibiting NFκB-mediated cellular functions. HDAC- and silent information regulator (SIR)-2-dependent acetylation of Bcl-6 causes downregulation of activity by inhibiting the ability of Bcl-6 to recruit complexes containing histone deacetylases (HDACs).

Research Area

Epigenetics and Nuclear Signaling

Image Data



Western blot analysis of Bcl6 in 293 lysates using Bcl6 antibody.

Note

For research use only.