

**Product Name: CD146 Rabbit Polyclonal Antibody**  
**Catalog #: APRab00371**



## Summary

|                        |                                  |
|------------------------|----------------------------------|
| <b>Production Name</b> | CD146 Rabbit Polyclonal Antibody |
| <b>Description</b>     | Primary antibody                 |
| <b>Host</b>            | Rabbit                           |
| <b>Application</b>     | WB,ICC/IF                        |
| <b>Reactivity</b>      | Human                            |

## Performance

|                     |  |
|---------------------|--|
| <b>Conjugation</b>  | Unconjugated   |
| <b>Modification</b> | Unmodified   |
| <b>Isotype</b>      | IgG  |
| <b>Clonality</b>    | Polyclonal Antibody  |
| <b>Form</b>         | Liquid   |
| <b>Storage</b>      | Store at 4°C short term. Aliquot and store at -20°C long term. Avoid freeze/thaw cycles. |
| <b>Buffer</b>       | 50mM Tris-Glycine(pH 7.4), 0.15M NaCl, 40% Glycerol, 0.01% Sodium azide and 0.05% BSA    |
| <b>Purification</b> | Affinity Purified  |

## Immunogen

|                          |              |
|--------------------------|--------------|
| <b>Gene Name</b>         | MCAM         |
| <b>Alternative Names</b> | CD146; MUC18 |
| <b>Gene ID</b>           | 4162         |
| <b>SwissProt ID</b>      | P43121       |

## Application

|                         |   |
|-------------------------|---|
| <b>Dilution Ratio</b>   | WB: 1/500-1/1000 IF: 1/50-1/200             |
| <b>Molecular Weight</b> | Calculated MW: 72 kDa; Observed MW: 120 kDa |

## Background

**Product Name: CD146 Rabbit Polyclonal Antibody**  
**Catalog #: APRab00371**

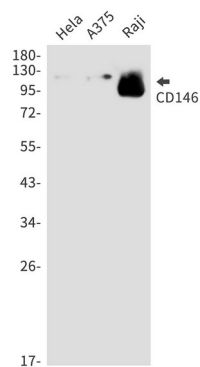


CD146 plays a role in cell adhesion, and in cohesion of the endothelial monolayer at intercellular junctions in vascular tissue. Its expression may allow melanoma cells to interact with cellular elements of the vascular system, thereby enhancing hematogeneous tumor spread. Could be an adhesion molecule active in neural crest cells during embryonic development.

## Research Area

Immunology

## Image Data



Western blot analysis of CD146 in HeLa, A375, Raji lysates using CD146 antibody.

## Note

For research use only.