

Product Name: AMPA Receptor 2 Rabbit Polyclonal Antibody
Catalog #: APRab00369



Summary

Production Name	AMPA Receptor 2 Rabbit Polyclonal Antibody
Description	Primary antibody
Host	Rabbit
Application	WB,IHC-F,IHC-P,ICC/IF,IP
Reactivity	Mouse,Rat

Performance

Conjugation	Unconjugated
Modification	Unmodified
Isotype	IgG
Clonality	Polyclonal Antibody
Form	Liquid
Storage	Store at 4°C short term. Aliquot and store at -20°C long term. Avoid freeze/thaw cycles.
Buffer	50mM Tris-Glycine(pH 7.4), 0.15M NaCl, 40% Glycerol, 0.01% Sodium azide and 0.05% BSA
Purification	Affinity Purified

Immunogen

Gene Name	GRIA2
Alternative Names	GRIA2; GLUR2; Glutamate receptor 2; GluR-2; AMPA-selective glutamate receptor 2; GluR-B; GluR-K2; Glutamate receptor ionotropic; AMPA 2; GluA2
Gene ID	2891
SwissProt ID	P42262

Application

Dilution Ratio	WB: 1/500-1/1000 IHC: 1/50-1/100 IF: 1/50-1/200 IP: 1/20
Molecular Weight	Calculated MW: 99 kDa; Observed MW: 99 kDa

Product Name: AMPA Receptor 2 Rabbit Polyclonal Antibody
Catalog #: APRab00369



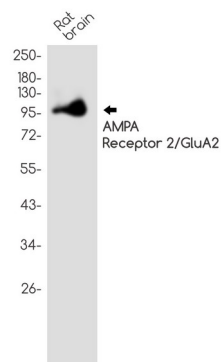
Background

Ionotropic glutamate receptor. L-glutamate acts as an excitatory neurotransmitter at many synapses in the central nervous system. Binding of the excitatory neurotransmitter L-glutamate induces a conformation change, leading to the opening of the cation channel, and thereby converts the chemical signal to an electrical impulse. The receptor then desensitizes rapidly and enters a transient inactive state, characterized by the presence of bound agonist.

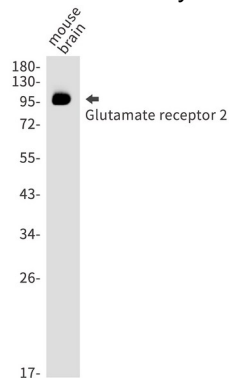
Research Area

Neuroscience

Image Data



Western blot analysis of AMPA Receptor 2/GluA2 in rat brain lysates using AMPA Receptor 2 antibody.



Western blot analysis of Glutamate receptor 2 in mouse brain lysates using Glutamate receptor 2 antibody.

Note

For research use only.