

---

## Summary

<b>Production Name</b>	STAT2 Rabbit Polyclonal Antibody
<b>Description</b>	Primary antibody
<b>Host</b>	Rabbit
<b>Application</b>	WB,IHC-F,IHC-P,ICC/IF
<b>Reactivity</b>	Human

## Performance

<b>Conjugation</b>	Unconjugated
<b>Modification</b>	Unmodified
<b>Isotype</b>	IgG
<b>Clonality</b>	Polyclonal Antibody
<b>Form</b>	Liquid
<b>Storage</b>	Store at 4°C short term. Aliquot and store at -20°C long term. Avoid freeze/thaw cycles.
<b>Buffer</b>	50mM Tris-Glycine(pH 7.4), 0.15M NaCl, 40% Glycerol, 0.01% Sodium azide and 0.05% BSA
<b>Purification</b>	Affinity Purified

## Immunogen

<b>Gene Name</b>	STAT2
<b>Alternative Names</b>	Homo sapiens interferon alpha induced transcriptional activator; ISGF 3; P113; signal transducer and activator of transcription 2 113kD; STAT113; Stat2
<b>Gene ID</b>	6773
<b>SwissProt ID</b>	P52630

## Application

<b>Dilution Ratio</b>	WB: 1/500-1/1000 IHC: 1/50-1/100 IF: 1/50-1/200
<b>Molecular Weight</b>	Calculated MW: 98 kDa; Observed MW: 98 kDa

**Product Name: STAT2 Rabbit Polyclonal Antibody**  
**Catalog #: APRab00368**



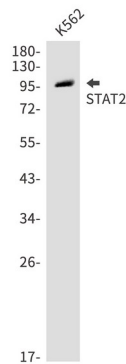
## Background

STAT2 (113-kDa), originally purified from the nuclei of alpha-interferon-treated cells, is critical to the transcriptional responses induced by type I interferons, IFN-alpha/beta. Stat2 is rapidly activated by phosphorylation at Tyr690 in response to stimulation by IFN-alpha/beta via associations with receptor-bound Jak kinases

## Research Area

Signal Transduction

## Image Data



Western blot analysis of STAT2 in K562 lysates using STAT2 antibody.

## Note

For research use only.