
Summary

Production Name	LI Cadherin Rabbit Polyclonal Antibody
Description	Primary antibody
Host	Rabbit
Application	WB,IHC-P,IP
Reactivity	Human

Performance

Conjugation	Unconjugated
Modification	Unmodified
Isotype	IgG
Clonality	Polyclonal Antibody
Form	Liquid
Storage	Store at 4°C short term. Aliquot and store at -20°C long term. Avoid freeze/thaw cycles.
Buffer	50mM Tris-Glycine(pH 7.4), 0.15M NaCl, 40% Glycerol, 0.01% Sodium azide and 0.05% BSA
Purification	Affinity Purified

Immunogen

Gene Name	CDH17
Alternative Names	Cadherin 17; Cdh17; HPT 1; LI-cadherin; Liver Cadherin; liver inTine cadherin
Gene ID	1015
SwissProt ID	Q12864

Application

Dilution Ratio	WB: 1/500-1/1000 IHC: 1/50-1/100 IP: 1/20
Molecular Weight	Calculated MW: 92 kDa; Observed MW: 120 kDa

Background

Product Name: LI Cadherin Rabbit Polyclonal Antibody
Catalog #: APRab00363

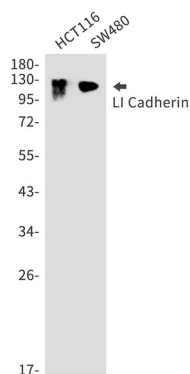


Cadherins are calcium dependent cell adhesion proteins. They preferentially interact with themselves in a homophilic manner in connecting cells; cadherins may thus contribute to the sorting of heterogeneous cell types. LI-cadherin may have a role in the morphological organization of liver and intestine. Involved in intestinal peptide transport.

Research Area

Cell Biology

Image Data



Western blot analysis of LI Cadherin in HCT116, SW480 lysates using LI Cadherin antibody.

Note

For research use only.