

Product Name: CD14 Rabbit Polyclonal Antibody
Catalog #: APRab00362



Summary

Production Name	CD14 Rabbit Polyclonal Antibody
Description	Primary antibody
Host	Rabbit
Application	WB,IHC-F,IHC-P,ICC/IF
Reactivity	Human

Performance

Conjugation	Unconjugated
Modification	Unmodified
Isotype	IgG
Clonality	Polyclonal Antibody
Form	Liquid
Storage	Store at 4°C short term. Aliquot and store at -20°C long term. Avoid freeze/thaw cycles.
Buffer	50mM Tris-Glycine(pH 7.4), 0.15M NaCl, 40% Glycerol, 0.01% Sodium azide and 0.05% BSA
Purification	Affinity Purified

Immunogen

Gene Name	CD14
Alternative Names	CD14; Monocyte differentiation antigen CD14; Myeloid cell-specific leucine-rich glycoprotein; CD antigen CD14
Gene ID	929
SwissProt ID	P08571

Application

Dilution Ratio	WB: 1/500-1/1000 IHC: 1/50-1/100 IF: 1/50-1/200
Molecular Weight	Calculated MW: 40 kDa; Observed MW: 50 kDa

Product Name: CD14 Rabbit Polyclonal Antibody
Catalog #: APRab00362



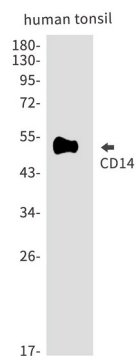
Background

CD14 antigen is a GPI-linked glycoprotein with a molecular weight of 55kD. The CD14 antigen is expressed on cells of the myelomonocytic lineage including monocytes, macrophages and Langerhans cells. Low expression is observed on neutrophils and on human B cells. CD14 antigen is a receptor for bacterial lipopolysaccharide (LPS, endotoxin) and the lipopolysaccharide binding protein (LBP). LBP and CD14 antigen serves two physiological roles.

Research Area

Immunology

Image Data



Western blot analysis of CD14 in Human tonsil lysates using CD14 antibody.

Note

For research use only.