

**Product Name: Integrin beta 4 Rabbit Polyclonal Antibody**  
**Catalog #: APRab00352**

---

## Summary

<b>Production Name</b>	Integrin beta 4 Rabbit Polyclonal Antibody
<b>Description</b>	Primary antibody
<b>Host</b>	Rabbit
<b>Application</b>	WB,IHC-P
<b>Reactivity</b>	Human

## Performance

<b>Conjugation</b>	Unconjugated
<b>Modification</b>	Unmodified
<b>Isotype</b>	IgG
<b>Clonality</b>	Polyclonal Antibody
<b>Form</b>	Liquid
<b>Storage</b>	Store at 4°C short term. Aliquot and store at -20°C long term. Avoid freeze/thaw cycles.
<b>Buffer</b>	50mM Tris-Glycine(pH 7.4), 0.15M NaCl, 40% Glycerol, 0.01% Sodium azide and 0.05% BSA
<b>Purification</b>	Affinity Purified

## Immunogen

<b>Gene Name</b>	Itgb4
<b>Alternative Names</b>	CD104
<b>Gene ID</b>	192897.0
<b>SwissProt ID</b>	A2A863

## Application

<b>Dilution Ratio</b>	WB: 1/500-1/1000 IHC: 1/50-1/100
<b>Molecular Weight</b>	Calculated MW: 202 kDa; Observed MW: 202 kDa

**Product Name: Integrin beta 4 Rabbit Polyclonal Antibody**  
**Catalog #: APRab00352**

---

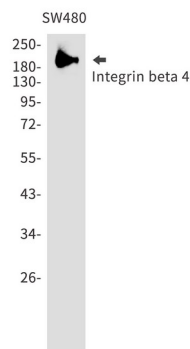
## Background

Integrin alpha-6/beta-4 is a receptor for laminin. It plays a critical structural role in the hemidesmosome of epithelial cells. Is required for the regulation of keratinocyte polarity and motility. ITGA6:ITGB4 binds to NRG1 (via EGF domain) and this binding is essential for NRG1-ERBB signaling. ITGA6:ITGB4 binds to IGF1 and this binding is essential for IGF1 signaling. ITGA6:ITGB4 binds to IGF2 and this binding is essential for IGF2 signaling.

## Research Area

Signal Transduction

## Image Data



Western blot analysis of Integrin beta 4 in SW480 lysates using Integrin beta 4 antibody.

## Note

For research use only.