

Summary

Production Name	CCR8 Rabbit Polyclonal Antibody
Description	Primary antibody
Host	Rabbit
Application	WB,ICC/IF,FC
Reactivity	Rat

Performance

Conjugation	Unconjugated
Modification	Unmodified
Isotype	IgG
Clonality	Polyclonal Antibody
Form	Liquid
Storage	Store at 4°C short term. Aliquot and store at -20°C long term. Avoid freeze/thaw cycles.
Buffer	50mM Tris-Glycine(pH 7.4), 0.15M NaCl, 40% Glycerol, 0.01% Sodium azide and 0.05% BSA
Purification	Affinity Purified

Immunogen

Gene Name	CCR8
Alternative Names	CKRL1; CMKBR8; CMKBRL2
Gene ID	1237
SwissProt ID	P51685

Application

Dilution Ratio	WB: 1/500-1/1000 IF: 1/50-1/200 FC: 1/50-1/100
Molecular Weight	Calculated MW: 41 kDa; Observed MW: 41 kDa

Background

Product Name: CCR8 Rabbit Polyclonal Antibody
Catalog #: APRab00351

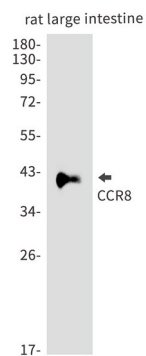


Receptor for the chemokine CCL1/SCYA1/I-309. May regulate monocyte chemotaxis and thymic cell line apoptosis.
Alternative coreceptor with CD4 for HIV-1 infection.

Research Area

Immunology

Image Data



Western blot analysis of CCR8 in rat large intestine lysates using CCR8 antibody.

Note

For research use only.