

---

## Summary

<b>Production Name</b>	STAT6 Rabbit Polyclonal Antibody
<b>Description</b>	Primary antibody
<b>Host</b>	Rabbit
<b>Application</b>	WB,IHC-F,IHC-P,ICC/IF,FC,IP
<b>Reactivity</b>	Mouse

## Performance

<b>Conjugation</b>	Unconjugated
<b>Modification</b>	Unmodified
<b>Isotype</b>	IgG
<b>Clonality</b>	Polyclonal Antibody
<b>Form</b>	Liquid
<b>Storage</b>	Store at 4°C short term. Aliquot and store at -20°C long term. Avoid freeze/thaw cycles.
<b>Buffer</b>	50mM Tris-Glycine(pH 7.4), 0.15M NaCl, 40% Glycerol, 0.01% Sodium azide and 0.05% BSA
<b>Purification</b>	Affinity Purified

## Immunogen

<b>Gene Name</b>	STAT6
<b>Alternative Names</b>	STAT6; Signal transducer and activator of transcription 6; IL-4 Stat
<b>Gene ID</b>	6778
<b>SwissProt ID</b>	P42226

## Application

<b>Dilution Ratio</b>	WB: 1/500-1/1000 IHC: 1/50-1/100 IF: 1/50-1/200 IP: 1/20 FC: 1/50-1/100
<b>Molecular Weight</b>	Calculated MW: 94 kDa; Observed MW: 110 kDa

**Product Name: STAT6 Rabbit Polyclonal Antibody**  
**Catalog #: APRab00349**



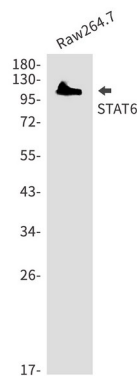
## Background

STAT6 transcription factor of the STAT family. Plays a central role in IL4-mediated biological responses. Induces the expression of BCL2L1/BCL-X(L), which is responsible for the anti-apoptotic activity of IL4.

## Research Area

Signal Transduction

## Image Data



Western blot analysis of STAT6 in Raw264.7 lysates using STAT6 antibody.

## Note

For research use only.