
Summary

Production Name	OTC Rabbit Polyclonal Antibody
Description	Primary antibody
Host	Rabbit
Application	WB,IHC-P,IP
Reactivity	Mouse,Rat

Performance

Conjugation	Unconjugated
Modification	Unmodified
Isotype	IgG
Clonality	Polyclonal Antibody
Form	Liquid
Storage	Store at 4°C short term. Aliquot and store at -20°C long term. Avoid freeze/thaw cycles.
Buffer	50mM Tris-Glycine(pH 7.4), 0.15M NaCl, 40% Glycerol, 0.01% Sodium azide and 0.05% BSA
Purification	Affinity Purified

Immunogen

Gene Name	OTC
Alternative Names	OTCase; Ornithine carbamoyltransferase; mitochondrial; OCTD
Gene ID	5009
SwissProt ID	P00480

Application

Dilution Ratio	WB: 1/500-1/1000 IHC: 1/50-1/100 IP: 1/20
Molecular Weight	Calculated MW: 40 kDa; Observed MW: 40 kDa

Background

Product Name: OTC Rabbit Polyclonal Antibody
Catalog #: APRab00348

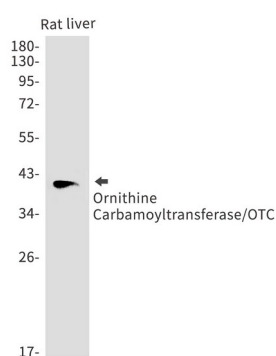


This nuclear gene encodes a mitochondrial matrix enzyme. Missense, nonsense, and frameshift mutations in this enzyme lead to ornithine transcarbamylase deficiency, which causes hyperammonemia. Since the gene for this enzyme maps close to that for Duchenne muscular dystrophy, it may play a role in that disease also.

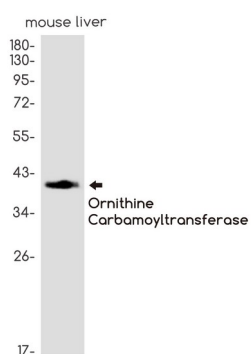
Research Area

Tags & Cell Markers

Image Data



Western blot analysis of Ornithine Carbamoyltransferase/OTC in rat liver lysates using OTC antibody.



Western blot analysis of Ornithine Carbamoyltransferase/OTC in mouse liver lysates using Ornithine Carbamoyltransferase/OTC antibody.

Note

For research use only.