

## Summary

<b>Production Name</b>	E2F4 Rabbit Polyclonal Antibody
<b>Description</b>	Primary antibody
<b>Host</b>	Rabbit
<b>Application</b>	WB,IHC-P,ICC/IF,FC
<b>Reactivity</b>	Human

## Performance

<b>Conjugation</b>	Unconjugated
<b>Modification</b>	Unmodified
<b>Isotype</b>	IgG
<b>Clonality</b>	Polyclonal Antibody
<b>Form</b>	Liquid
<b>Storage</b>	Store at 4°C short term. Aliquot and store at -20°C long term. Avoid freeze/thaw cycles.
<b>Buffer</b>	Rabbit IgG in phosphate buffered saline , pH 7.4, 150mM NaCl, 0.02% sodium azide and 50% glycerol.
<b>Purification</b>	Affinity Chromatography

## Immunogen

<b>Gene Name</b>	E2F4
<b>Alternative Names</b>	E2F4; Transcription factor E2F4; E2F-4
<b>Gene ID</b>	1874
<b>SwissProt ID</b>	Q16254

## Application

<b>Dilution Ratio</b>	WB: 1/500-1/1000 IHC: 1/50-1/100 IF: 1/50-1/200 FC: 1/50-1/100
<b>Molecular Weight</b>	Calculated MW: 44 kDa; Observed MW: 60 kDa

## Background

**Product Name: E2F4 Rabbit Polyclonal Antibody**  
**Catalog #: APRab00342**

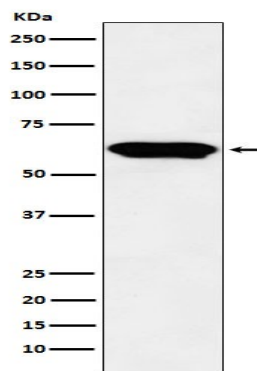


Transcription activator that binds DNA cooperatively with DP proteins through the E2 recognition site, 5'-TTTC[CG]CGC-3' found in the promoter region of a number of genes whose products are involved in cell cycle regulation or in DNA replication.

## Research Area

Epigenetics and Nuclear Signaling

## Image Data



Western blot analysis of E2F4 in Raji lysates using E2F4 antibody.

## Note

For research use only.