

**Product Name: Thyrotropin Subunit beta Rabbit
Polyclonal Antibody
Catalog #: APRab00341**

Summary

Production Name	Thyrotropin Subunit beta Rabbit Polyclonal Antibody
Description	Primary antibody
Host	Rabbit
Application	WB,IHC-P
Reactivity	Human

Performance

Conjugation	Unconjugated
Modification	Unmodified
Isotype	IgG
Clonality	Polyclonal Antibody
Form	Liquid
Storage	Store at 4°C short term. Aliquot and store at -20°C long term. Avoid freeze/thaw cycles.
Buffer	Rabbit IgG in phosphate buffered saline , pH 7.4, 150mM NaCl, 0.02% sodium azide and 50% glycerol.
Purification	Affinity Chromatography

Immunogen

Gene Name	TSHB
Alternative Names	CHNG4; TSHB
Gene ID	7252
SwissProt ID	P01222

Application

Dilution Ratio	WB: 1/500-1/1000 IHC: 1/50-1/100
Molecular Weight	Calculated MW: 16 kDa; Observed MW: 16 kDa

**Product Name: Thyrotropin Subunit beta Rabbit
Polyclonal Antibody
Catalog #: APRab00341**

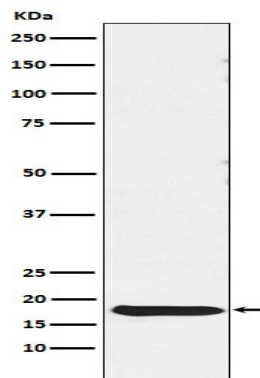
Background

Various hormones are secreted from the anterior pituitary during development and growth. Thyroid Stimulating Hormone (TSH) is secreted from the anterior pituitary and controls thyroid structure and metabolism

Research Area

Signal Transduction

Image Data



Western blot analysis of TSH beta in Human pituitary lysates using Thyrotropin Subunit beta antibody.

Note

For research use only.