

**Product Name: Prostate Secretory Protein Rabbit
Polyclonal Antibody**
Catalog #: APRab00337

Summary

Production Name	Prostate Secretory Protein Rabbit Polyclonal Antibody
Description	Primary antibody
Host	Rabbit
Application	WB,IHC-P,IP
Reactivity	Human

Performance

Conjugation	Unconjugated
Modification	Unmodified
Isotype	IgG
Clonality	Polyclonal Antibody
Form	Liquid
Storage	Store at 4°C short term. Aliquot and store at -20°C long term. Avoid freeze/thaw cycles.
Buffer	Rabbit IgG in phosphate buffered saline , pH 7.4, 150mM NaCl, 0.02% sodium azide and 50% glycerol.
Purification	Affinity Chromatography

Immunogen

Gene Name	MSMB
Alternative Names	MSP; PSP; IGBF; MSPB; PN44; PRPS; HPC13; PSP57; PSP94; PSP-94
Gene ID	4477
SwissProt ID	P08118

Application

Dilution Ratio	WB: 1/500-1/1000 IHC: 1/50-1/100 IP: 1/20
Molecular Weight	Calculated MW: 13 kDa; Observed MW: 13 kDa

**Product Name: Prostate Secretory Protein Rabbit
Polyclonal Antibody**
Catalog #: APRab00337

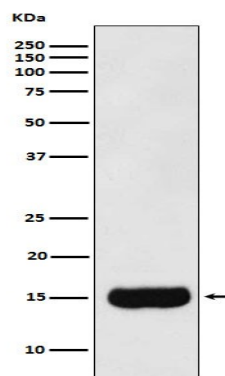
Background

Specific receptors for this protein are found on spermatozoa and in the prostate.

Research Area

Tags & Cell Markers

Image Data



Western blot analysis of Prostate Secretory Protein/PSP in Human prostate cancer lysates using Prostate Secretory Protein antibody.

Note

For research use only.