

Summary

Production Name	MCM3 Rabbit Polyclonal Antibody
Description	Primary antibody
Host	Rabbit
Application	WB,IHC-P,ICC/IF,FC
Reactivity	Human,Mouse,Rat

Performance

Conjugation	Unconjugated
Modification	Unmodified
Isotype	IgG
Clonality	Polyclonal Antibody
Form	Liquid
Storage	Store at 4°C short term. Aliquot and store at -20°C long term. Avoid freeze/thaw cycles.
Buffer	Rabbit IgG in phosphate buffered saline , pH 7.4, 150mM NaCl, 0.02% sodium azide and 50% glycerol.
Purification	Affinity Chromatography

Immunogen

Gene Name	MCM3
Alternative Names	MCM3; HCC5; P1-MCM3; P1.h; RLFB
Gene ID	4172
SwissProt ID	P25205

Application

Dilution Ratio	WB: 1/500-1/1000 IHC: 1/50-1/100 IF: 1/50-1/200 FC: 1/50-1/100
Molecular Weight	Calculated MW: 91 kDa; Observed MW: 100 kDa

Background

Product Name: MCM3 Rabbit Polyclonal Antibody
Catalog #: APRab00336

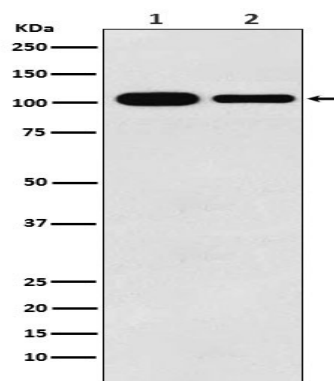


Acts as component of the MCM2-7 complex (MCM complex) which is the putative replicative helicase essential for 'once per cell cycle' DNA replication initiation and elongation in eukaryotic cells.

Research Area

Epigenetics and Nuclear Signaling

Image Data



Western blot analysis of MCM3 in (1) K562 lysates; (2) RAW264.7 lysates using MCM3 antibody.

Note

For research use only.