

**Product Name: alpha Internexin Rabbit Polyclonal Antibody**  
**Catalog #: APRab00313**

---

## Summary

<b>Production Name</b>	alpha Internexin Rabbit Polyclonal Antibody
<b>Description</b>	Primary antibody
<b>Host</b>	Rabbit
<b>Application</b>	WB,IHC-P,ICC/IF,FC,IP
<b>Reactivity</b>	Human,Mouse,Rat

## Performance

<b>Conjugation</b>	Unconjugated
<b>Modification</b>	Unmodified
<b>Isotype</b>	IgG
<b>Clonality</b>	Polyclonal Antibody
<b>Form</b>	Liquid
<b>Storage</b>	Store at 4°C short term. Aliquot and store at -20°C long term. Avoid freeze/thaw cycles.
<b>Buffer</b>	Rabbit IgG in phosphate buffered saline , pH 7.4, 150mM NaCl, 0.02% sodium azide and 50% glycerol.
<b>Purification</b>	Affinity Chromatography

## Immunogen

<b>Gene Name</b>	INA
<b>Alternative Names</b>	INA; NEF5; Alpha-internexin; Alpha-Inx; 66 kDa neurofilament protein; NF-66; Neurofilament-66; Neurofilament 5
<b>Gene ID</b>	9118
<b>SwissProt ID</b>	Q16352

## Application

<b>Dilution Ratio</b>	WB: 1/500-1/1000 IHC: 1/50-1/100 IF: 1/50-1/200 IP: 1/20 FC: 1/50-1/100
-----------------------	---

**Product Name: alpha Internexin Rabbit Polyclonal Antibody**  
**Catalog #: APRab00313**

---

**Molecular Weight**

Calculated MW: 55 kDa; Observed MW: 60 kDa

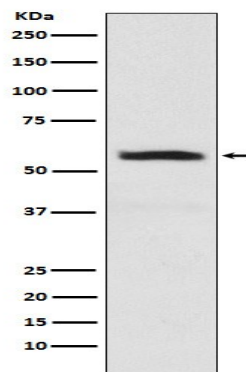
**Background**

Class-IV neuronal intermediate filament that is able to self-assemble. It is involved in the morphogenesis of neurons. It may form an independent structural network without the involvement of other neurofilaments or it may cooperate with NF-L to form the filamentous backbone to which NF-M and NF-H attach to form the cross-bridges.

**Research Area**

Cell Biology

**Image Data**



Western blot analysis of alpha Internexin in SH-SY5Y lysates using alpha Internexin antibody.

**Note**

For research use only.