

Summary

Production Name	SATB2 Rabbit Polyclonal Antibody
Description	Primary antibody
Host	Rabbit
Application	WB,IHC-P
Reactivity	Human

Performance

Conjugation	Unconjugated
Modification	Unmodified
Isotype	IgG
Clonality	Polyclonal Antibody
Form	Liquid
Storage	Store at 4°C short term. Aliquot and store at -20°C long term. Avoid freeze/thaw cycles.
Buffer	Rabbit IgG in phosphate buffered saline , pH 7.4, 150mM NaCl, 0.02% sodium azide and 50% glycerol.
Purification	Affinity Chromatography

Immunogen

Gene Name	SATB2
Alternative Names	GLSS; SATB family member 2; SATB homeobox 2; SATB2; Special AT rich sequence binding protein 2
Gene ID	23314
SwissProt ID	Q9UPW6

Application

Dilution Ratio	WB: 1/500-1/1000 IHC: 1/50-1/100
Molecular Weight	Calculated MW: 83 kDa; Observed MW: 83 kDa

Product Name: SATB2 Rabbit Polyclonal Antibody
Catalog #: APRab00307



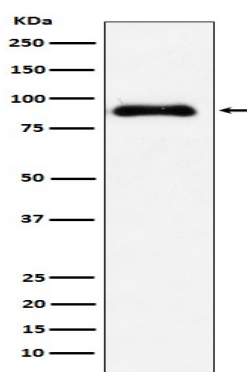
Background

Binds to DNA, at nuclear matrix- or scaffold-associated regions. Thought to recognize the sugar-phosphate structure of double-stranded DNA. Transcription factor controlling nuclear gene expression, by binding to matrix attachment regions (MARs) of DNA and inducing a local chromatin-loop remodeling. Acts as a docking site for several chromatin remodeling enzymes and also by recruiting corepressors (HDACs) or coactivators (HATs) directly to promoters and enhancers.

Research Area

Neuroscience

Image Data



Western blot analysis of SATB2 in HT-1080 lysates using SATB2 antibody.

Note

For research use only.