

Product Name: VPS35 Rabbit Polyclonal Antibody
Catalog #: APRab00296



Summary

Production Name	VPS35 Rabbit Polyclonal Antibody
Description	Primary antibody
Host	Rabbit
Application	WB,IHC-P,ICC/IF,FC
Reactivity	Human,Mouse,Rat

Performance

Conjugation	Unconjugated
Modification	Unmodified
Isotype	IgG
Clonality	Polyclonal Antibody
Form	Liquid
Storage	Store at 4°C short term. Aliquot and store at -20°C long term. Avoid freeze/thaw cycles.
Buffer	Rabbit IgG in phosphate buffered saline , pH 7.4, 150mM NaCl, 0.02% sodium azide and 50% glycerol.
Purification	Affinity Chromatography

Immunogen

Gene Name	VPS35
Alternative Names	hVPS35; MEM3; PARK17; VPS35
Gene ID	55737
SwissProt ID	Q96QK1

Application

Dilution Ratio	WB: 1/500-1/1000 IHC: 1/50-1/100 IF: 1/50-1/200 FC: 1/50-1/100
Molecular Weight	Calculated MW: 92 kDa; Observed MW: 92 kDa

Background

Product Name: VPS35 Rabbit Polyclonal Antibody
Catalog #: APRab00296

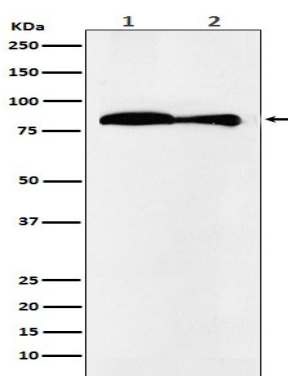


Essential component of the retromer complex, a complex required to retrieve lysosomal enzyme receptors (IGF2R and M6PR) from endosomes to the trans-Golgi network. Also required to regulate transcytosis of the polymeric immunoglobulin receptor (pIgR-pIgA).

Research Area

Signal Transduction

Image Data



Western blot analysis of VPS35 in (1) HeLa lysates; (2) mouse kidney lysates using VPS35 antibody.

Note

For research use only.