

**Product Name: Glutamate Receptor 2/3 Rabbit
Polyclonal Antibody
Catalog #: APRab00295**

Summary

Production Name	Glutamate Receptor 2/3 Rabbit Polyclonal Antibody
Description	Primary antibody
Host	Rabbit
Application	WB,IP
Reactivity	Human,Mouse,Rat

Performance

Conjugation	Unconjugated
Modification	Unmodified
Isotype	IgG
Clonality	Polyclonal Antibody
Form	Liquid
Storage	Store at 4°C short term. Aliquot and store at -20°C long term. Avoid freeze/thaw cycles.
Buffer	Rabbit IgG in phosphate buffered saline , pH 7.4, 150mM NaCl, 0.02% sodium azide and 50% glycerol.
Purification	Affinity Chromatography

Immunogen

Gene Name	GRIA2/GRIA3
Alternative Names	GluR K2; GluR K3; GLURB; GLURC; GRIA2; GRIA3
Gene ID	2891/2892
SwissProt ID	P42262/P42263

Application

Dilution Ratio	WB: 1/500-1/1000 IP: 1/20
Molecular Weight	Calculated MW: 99 kDa; Observed MW: 99 kDa

**Product Name: Glutamate Receptor 2/3 Rabbit
Polyclonal Antibody
Catalog #: APRab00295**

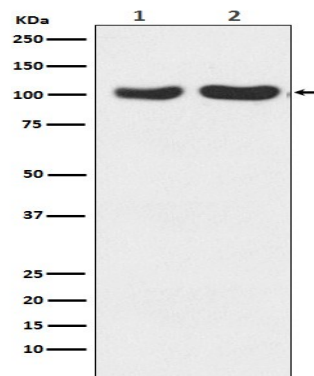
Background

Ion channels activated by glutamate are typically divided into two classes. Those sensitive to N-methyl-D-aspartate (NMDA) are designated NMDA receptors (NMDAR) while those activated by α -amino-3-hydroxy-5-methyl-4-isoxalone propionic acid (AMPA) are known as AMPA receptors (AMPA).

Research Area

Neuroscience

Image Data



Western blot analysis of GluR2+GluR3 in (1) Human fetal brain lysates; (2) mouse brain lysates using Glutamate Receptor 2/3 antibody.

Note

For research use only.