

Product Name: RRM2 Rabbit Polyclonal Antibody
Catalog #: APRab00288



Summary

Production Name	RRM2 Rabbit Polyclonal Antibody
Description	Primary antibody
Host	Rabbit
Application	WB,ICC/IF,IP
Reactivity	Human

Performance

Conjugation	Unconjugated
Modification	Unmodified
Isotype	IgG
Clonality	Polyclonal Antibody
Form	Liquid
Storage	Store at 4°C short term. Aliquot and store at -20°C long term. Avoid freeze/thaw cycles.
Buffer	Rabbit IgG in phosphate buffered saline , pH 7.4, 150mM NaCl, 0.02% sodium azide and 50% glycerol.
Purification	Affinity Chromatography

Immunogen

Gene Name	RRM2
Alternative Names	R2; RR2M
Gene ID	6241
SwissProt ID	P31350

Application

Dilution Ratio	WB: 1/500-1/1000 IF: 1/50-1/200 IP: 1/20
Molecular Weight	Calculated MW: 45 kDa; Observed MW: 45 kDa

Background

Product Name: RRM2 Rabbit Polyclonal Antibody
Catalog #: APRab00288

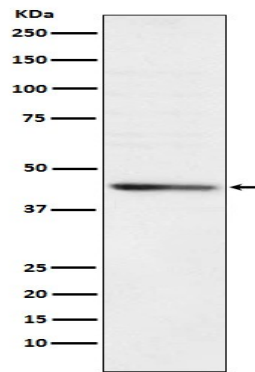


Provides the precursors necessary for DNA synthesis. Catalyzes the biosynthesis of deoxyribonucleotides from the corresponding ribonucleotides. Inhibits Wnt signaling.

Research Area

Epigenetics and Nuclear Signaling

Image Data



Western blot analysis of RRM2 in HeLa lysates using RRM2 antibody.

Note

For research use only.