
Summary

Production Name	Cullin 3 Rabbit Polyclonal Antibody
Description	Primary antibody
Host	Rabbit
Application	WB,FC,IP
Reactivity	Human,Mouse,Rat

Performance

Conjugation	Unconjugated
Modification	Unmodified
Isotype	IgG
Clonality	Polyclonal Antibody
Form	Liquid
Storage	Store at 4°C short term. Aliquot and store at -20°C long term. Avoid freeze/thaw cycles.
Buffer	Rabbit IgG in phosphate buffered saline , pH 7.4, 150mM NaCl, 0.02% sodium azide and 50% glycerol.
Purification	Affinity Chromatography

Immunogen

Gene Name	CUL3
Alternative Names	CUL3; KIAA0617; Cullin-3; CUL-3
Gene ID	8452
SwissProt ID	Q13618

Application

Dilution Ratio	WB: 1/500-1/1000 IP: 1/20 FC: 1/50-1/100
Molecular Weight	Calculated MW: 89 kDa; Observed MW: 89 kDa

Background

Product Name: Cullin 3 Rabbit Polyclonal Antibody
Catalog #: APRab00283

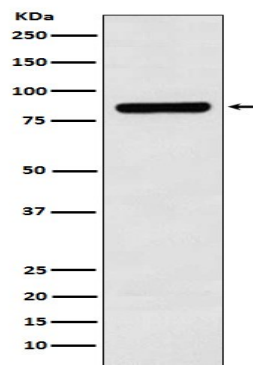


Core component of multiple cullin-RING-based BCR (BTB-CUL3-RBX1) E3 ubiquitin-protein ligase complexes which mediate the ubiquitination and subsequent proteasomal degradation of target proteins. As a scaffold protein may contribute to catalysis through positioning of the substrate and the ubiquitin-conjugating enzyme.

Research Area

Cell Biology

Image Data



Western blot analysis of Cullin 3 in SH-SY5Y lysates using Cullin 3 antibody.

Note

For research use only.