

Summary

Production Name	MCM5 Rabbit Polyclonal Antibody
Description	Primary antibody
Host	Rabbit
Application	WB,IHC-P,ICC/IF,FC,IP
Reactivity	Human,Mouse

Performance

Conjugation	Unconjugated
Modification	Unmodified
Isotype	IgG
Clonality	Polyclonal Antibody
Form	Liquid
Storage	Store at 4°C short term. Aliquot and store at -20°C long term. Avoid freeze/thaw cycles.
Buffer	Rabbit IgG in phosphate buffered saline , pH 7.4, 150mM NaCl, 0.02% sodium azide and 50% glycerol.
Purification	Affinity Chromatography

Immunogen

Gene Name	MCM5
Alternative Names	CDC46; MCM5; MGC5315; P1 CDC46
Gene ID	4174
SwissProt ID	P33992

Application

Dilution Ratio	WB: 1/500-1/1000 IHC: 1/50-1/100 IF: 1/50-1/200 IP: 1/20 FC: 1/50-1/100
Molecular Weight	Calculated MW: 82 kDa; Observed MW: 82 kDa

Product Name: MCM5 Rabbit Polyclonal Antibody
Catalog #: APRab00278



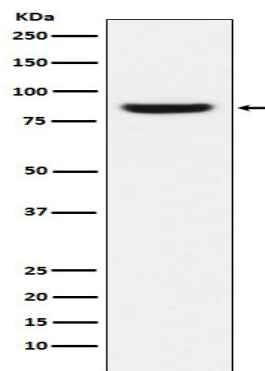
Background

MCM5 Belongs to the MCM family.

Research Area

Epigenetics and Nuclear Signaling

Image Data



Western blot analysis of MCM5 in MCF-7 lysates using MCM5 antibody.

Note

For research use only.