

Summary

Production Name	CD166 Rabbit Polyclonal Antibody
Description	Primary antibody
Host	Rabbit
Application	WB,IHC-P,ICC/IF,FC,IP
Reactivity	Human,Mouse,Rat

Performance

Conjugation	Unconjugated
Modification	Unmodified
Isotype	IgG
Clonality	Polyclonal Antibody
Form	Liquid
Storage	Store at 4°C short term. Aliquot and store at -20°C long term. Avoid freeze/thaw cycles.
Buffer	Rabbit IgG in phosphate buffered saline , pH 7.4, 150mM NaCl, 0.02% sodium azide and 50% glycerol.
Purification	Affinity Chromatography

Immunogen

Gene Name	ALCAM
Alternative Names	ALCAM; MEMD; CD166 antigen; Activated leukocyte cell adhesion molecule; CD166
Gene ID	214
SwissProt ID	Q13740

Application

Dilution Ratio	WB: 1/500-1/1000 IHC: 1/50-1/100 IF: 1/50-1/200 IP: 1/20 FC: 1/50-1/100
Molecular Weight	Calculated MW: 65 kDa; Observed MW: 100 kDa

Product Name: CD166 Rabbit Polyclonal Antibody
Catalog #: APRab00271



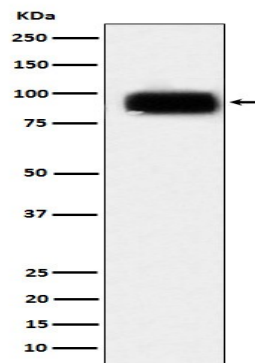
Background

Cell adhesion molecule that binds to CD6. Involved in neurite extension by neurons via heterophilic and homophilic interactions. May play a role in the binding of T- and B-cells to activated leukocytes, as well as in interactions between cells of the nervous system.

Research Area

Immunology

Image Data



Western blot analysis of CD166 in Daudi lysates using CD166 antibody.

Note

For research use only.