

Summary

Production Name	MAD2L2 Rabbit Polyclonal Antibody
Description	Primary antibody
Host	Rabbit
Application	WB,IHC-P,ICC/IF,FC,IP
Reactivity	Human,Mouse,Rat

Performance

Conjugation	Unconjugated
Modification	Unmodified
Isotype	IgG
Clonality	Polyclonal Antibody
Form	Liquid
Storage	Store at 4°C short term. Aliquot and store at -20°C long term. Avoid freeze/thaw cycles.
Buffer	Rabbit IgG in phosphate buffered saline , pH 7.4, 150mM NaCl, 0.02% sodium azide and 50% glycerol.
Purification	Affinity Chromatography

Immunogen

Gene Name	MAD2L2
Alternative Names	REV7; FANCV; MAD2B; POLZ2
Gene ID	10459
SwissProt ID	Q9UI95

Application

Dilution Ratio	WB: 1/500-1/1000 IHC: 1/50-1/100 IF: 1/50-1/200 IP: 1/20 FC: 1/50-1/100
Molecular Weight	Calculated MW: 24 kDa; Observed MW: 24 kDa

Product Name: MAD2L2 Rabbit Polyclonal Antibody
Catalog #: APRab00265



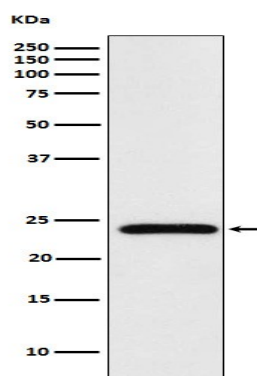
Background

Adapter protein able to interact with different proteins and involved in different biological processes. Mediates the interaction between the error-prone DNA polymerase zeta catalytic subunit REV3L and the inserter polymerase REV1, thereby mediating the second polymerase switching in translesion DNA synthesis.

Research Area

Cell Biology

Image Data



Western blot analysis of Mad2L2 in HeLa lysates using MAD2L2 antibody.

Note

For research use only.