

Summary

Production Name	OTX1/2 Rabbit Polyclonal Antibody
Description	Primary antibody
Host	Rabbit
Application	WB,IHC-P,ChIP
Reactivity	Human,Mouse,Rat

Performance

Conjugation	Unconjugated
Modification	Unmodified
Isotype	IgG
Clonality	Polyclonal Antibody
Form	Liquid
Storage	Store at 4°C short term. Aliquot and store at -20°C long term. Avoid freeze/thaw cycles.
Buffer	Rabbit IgG in phosphate buffered saline , pH 7.4, 150mM NaCl, 0.02% sodium azide and 50% glycerol.
Purification	Affinity Chromatography

Immunogen

Gene Name	OTX1/OTX2 Homeobox protein OTX1; Homeobox protein OTX2; Orthodenticle 1; Orthodenticle 2;
Alternative Names	Orthodenticle homeobox 1; Orthodenticle homeobox 2; Orthodenticle1; Orthodenticle2; otx1; otx2
Gene ID	5013/5015
SwissProt ID	P32242/P32243

Application

Dilution Ratio	WB: 1/500-1/1000 IHC: 1/50-1/100 ChIP: 1/20
Molecular Weight	Calculated MW: 37 kDa; Observed MW: 32 kDa

Product Name: OTX1/2 Rabbit Polyclonal Antibody
Catalog #: APRab00250



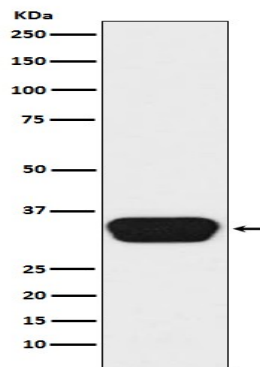
Background

Probably plays a role in the development of the brain and the sense organs. Can bind to the BCD target sequence (BTS): 5'-TCTAATCCC-3'.

Research Area

Neuroscience

Image Data



Western blot analysis of Otx1/2 in Y79 lysates using OTX1/2 antibody.

Note

For research use only.