
Summary

| | |
|------------------------|----------------------------------|
| Production Name | Slit2 Rabbit Polyclonal Antibody |
| Description | Primary antibody |
| Host | Rabbit |
| Application | WB,IHC-P,IP |
| Reactivity | Human,Mouse,Rat |

Performance

| | |
|---------------------|--|
| Conjugation | Unconjugated |
| Modification | Unmodified |
| Isotype | IgG |
| Clonality | Polyclonal Antibody |
| Form | Liquid |
| Storage | Store at 4°C short term. Aliquot and store at -20°C long term. Avoid freeze/thaw cycles. |
| Buffer | Rabbit IgG in phosphate buffered saline , pH 7.4, 150mM NaCl, 0.02% sodium azide and 50% glycerol. |
| Purification | Affinity Chromatography |

Immunogen

| | |
|--------------------------|---------------------------------------|
| Gene Name | SLIT2 |
| Alternative Names | slit guidance ligand 2; SLIL3; Slit-2 |
| Gene ID | 9353 |
| SwissProt ID | O94813 |

Application

| | |
|-------------------------|---|
| Dilution Ratio | WB: 1/500-1/1000 IHC: 1/50-1/100 IP: 1/20 |
| Molecular Weight | Calculated MW: 170 kDa; Observed MW: 58 kDa |

Background

Product Name: Slit2 Rabbit Polyclonal Antibody
Catalog #: APRab00236

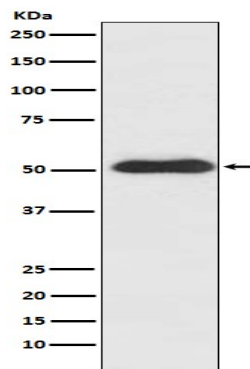


Thought to act as molecular guidance cue in cellular migration, and function appears to be mediated by interaction with roundabout homolog receptors.

Research Area

Neuroscience

Image Data



Western blot analysis of Slit2 in SH-SY5Y lysates using Slit2 antibody.

Note

For research use only.