

Product Name: Ran Rabbit Polyclonal Antibody
Catalog #: APRab00230



Summary

Production Name	Ran Rabbit Polyclonal Antibody
Description	Primary antibody
Host	Rabbit
Application	WB,ICC/IF,FC,IP
Reactivity	Human,Mouse,Rat

Performance

Conjugation	Unconjugated
Modification	Unmodified
Isotype	IgG
Clonality	Polyclonal Antibody
Form	Liquid
Storage	Store at 4°C short term. Aliquot and store at -20°C long term. Avoid freeze/thaw cycles.
Buffer	Rabbit IgG in phosphate buffered saline , pH 7.4, 150mM NaCl, 0.02% sodium azide and 50% glycerol.
Purification	Affinity Chromatography

Immunogen

Gene Name	RAN
Alternative Names	RAN; ARA24; OK/SW-cl.81; GTP-binding nuclear protein Ran; Androgen receptor-associated protein 24; GTPase Ran; Ras-like protein TC4; Ras-related nuclear protein
Gene ID	5901
SwissProt ID	P62826

Application

Dilution Ratio	WB: 1/500-1/1000 IF: 1/50-1/200 IP: 1/20 FC: 1/50-1/100
Molecular Weight	Calculated MW: 24 kDa; Observed MW: 24 kDa

Product Name: Ran Rabbit Polyclonal Antibody
Catalog #: APRab00230



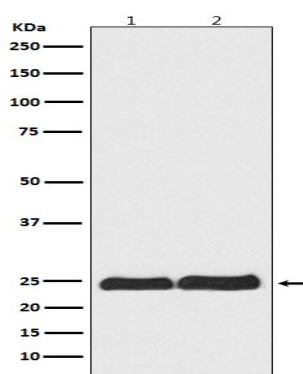
Background

GTP-binding protein involved in nucleocytoplasmic transport. Required for the import of protein into the nucleus and also for RNA export. Involved in chromatin condensation and control of cell cycle (By similarity).

Research Area

Cell Biology

Image Data



Western blot analysis of Ran in (1)HeLa lysates; (2)RAW264.7 lysates using Ran antibody.

Note

For research use only.