
Summary

Production Name	ROCK2 Rabbit Polyclonal Antibody
Description	Primary antibody
Host	Rabbit
Application	WB,ICC/IF
Reactivity	Human,Mouse,Rat

Performance

Conjugation	Unconjugated
Modification	Unmodified
Isotype	IgG
Clonality	Polyclonal Antibody
Form	Liquid
Storage	Store at 4°C short term. Aliquot and store at -20°C long term. Avoid freeze/thaw cycles.
Buffer	Rabbit IgG in phosphate buffered saline , pH 7.4, 150mM NaCl, 0.02% sodium azide and 50% glycerol.
Purification	Affinity Chromatography

Immunogen

Gene Name	ROCK2
Alternative Names	p164 ROCK 2; Rho kinase 2; ROCK 2; Rock II; Rock2m; ROK alpha; ROKalpha
Gene ID	9475
SwissProt ID	O75116

Application

Dilution Ratio	WB: 1/500-1/1000 IF: 1/50-1/200
Molecular Weight	Calculated MW: 161 kDa; Observed MW: 161 kDa

Background

Product Name: ROCK2 Rabbit Polyclonal Antibody
Catalog #: APRab00225

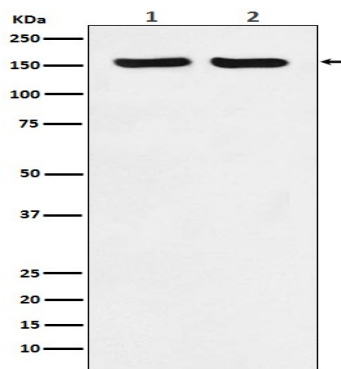


Regulates the assembly of the actin cytoskeleton. Promotes formation of stress fibers and of focal adhesion complexes.
Plays a role in smooth muscle contraction.

Research Area

Cell Biology

Image Data



Western blot analysis of ROCK2 in (1) HeLa lysates; (2) RAW264.7 lysates using ROCK2 antibody.

Note

For research use only.