

**Product Name: Growth Hormone Receptor Rabbit
Polyclonal Antibody
Catalog #: APRab00223**

Summary

Production Name	Growth Hormone Receptor Rabbit Polyclonal Antibody
Description	Primary antibody
Host	Rabbit
Application	WB,ICC/IF,FC
Reactivity	Human,Mouse,Rat

Performance

Conjugation	Unconjugated
Modification	Unmodified
Isotype	IgG
Clonality	Polyclonal Antibody
Form	Liquid
Storage	Store at 4°C short term. Aliquot and store at -20°C long term. Avoid freeze/thaw cycles.
Buffer	Rabbit IgG in phosphate buffered saline , pH 7.4, 150mM NaCl, 0.02% sodium azide and 50% glycerol.
Purification	Affinity Chromatography

Immunogen

Gene Name	GHR
Alternative Names	GHR; Growth hormone receptor; GH receptor; Somatotropin receptor
Gene ID	2690
SwissProt ID	P10912

Application

Dilution Ratio	WB: 1/500-1/1000 IF: 1/50-1/200 FC: 1/50-1/100
Molecular Weight	Calculated MW: 72 kDa; Observed MW: 140 kDa

Product Name: Growth Hormone Receptor Rabbit Polyclonal Antibody
Catalog #: APRab00223

Background

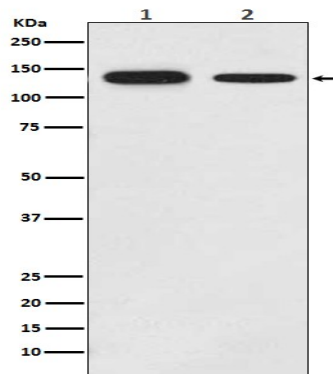
Receptor for pituitary gland growth hormone involved in regulating postnatal body growth. On ligand binding, couples to the JAK2/STAT5 pathway. The soluble form (GHBP) acts as a reservoir of growth hormone in plasma and may be a modulator/inhibitor of GH signaling.

Isoform 2 up-regulates the production of GHBP and acts as a negative inhibitor of GH signaling.

Research Area

Signal Transduction

Image Data



Western blot analysis of Growth hormone receptor in (1) MCF-7 lysates; (2) mouse brain lysates using Growth Hormone Receptor antibody.

Note

For research use only.