

**Product Name: BNP Rabbit Polyclonal Antibody**  
**Catalog #: APRab00216**



---

## Summary

<b>Production Name</b>	BNP Rabbit Polyclonal Antibody
<b>Description</b>	Primary antibody
<b>Host</b>	Rabbit
<b>Application</b>	WB
<b>Reactivity</b>	Human

## Performance

<b>Conjugation</b>	Unconjugated
<b>Modification</b>	Unmodified
<b>Isotype</b>	IgG
<b>Clonality</b>	Polyclonal Antibody
<b>Form</b>	Liquid
<b>Storage</b>	Store at 4°C short term. Aliquot and store at -20°C long term. Avoid freeze/thaw cycles.
<b>Buffer</b>	Rabbit IgG in phosphate buffered saline , pH 7.4, 150mM NaCl, 0.02% sodium azide and 50% glycerol.
<b>Purification</b>	Affinity Chromatography

## Immunogen

<b>Gene Name</b>	NPPB
<b>Alternative Names</b>	NPPB; Natriuretic peptides B; Gamma-brain natriuretic peptide
<b>Gene ID</b>	4879
<b>SwissProt ID</b>	P16860

## Application

<b>Dilution Ratio</b>	WB: 1/500-1/1000
<b>Molecular Weight</b>	Calculated MW: 15 kDa; Observed MW: 30 kDa

## Background

---

**Product Name: BNP Rabbit Polyclonal Antibody**  
**Catalog #: APRab00216**

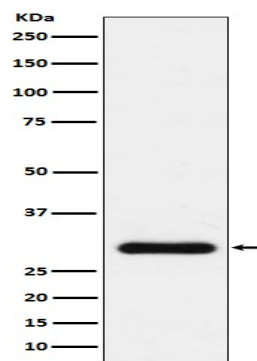


Brain natriuretic peptide (BNP) circulates in blood as a peptide hormone with natriuretic, vasodilatory and renin inhibitory properties. BNP is secreted predominantly by the left ventricular myocytes in response to volume expansion and pressure overload.

## Research Area

Signal Transduction

## Image Data



Western blot analysis of BNP in Human plasma lysates using BNP antibody.

## Note

For research use only.