

Product Name: p23 Rabbit Polyclonal Antibody
Catalog #: APRab00215



Summary

Production Name	p23 Rabbit Polyclonal Antibody
Description	Primary antibody
Host	Rabbit
Application	WB,ICC/IF,IP
Reactivity	Human,Mouse,Rat

Performance

Conjugation	Unconjugated
Modification	Unmodified
Isotype	IgG
Clonality	Polyclonal Antibody
Form	Liquid
Storage	Store at 4°C short term. Aliquot and store at -20°C long term. Avoid freeze/thaw cycles.
Buffer	Rabbit IgG in phosphate buffered saline , pH 7.4, 150mM NaCl, 0.02% sodium azide and 50% glycerol.
Purification	Affinity Chromatography

Immunogen

Gene Name	PTGES3 PTGES3; P23; TEBP; Prostaglandin E synthase 3; Cytosolic prostaglandin E2 synthase;
Alternative Names	cPGES; Hsp90 co-chaperone; Progesterone receptor complex p23; Telomerase-binding protein p23
Gene ID	10728
SwissProt ID	Q15185

Application

Dilution Ratio	WB: 1/500-1/1000 IF: 1/50-1/200 IP: 1/20
Molecular Weight	Calculated MW: 19 kDa; Observed MW: 23 kDa

Product Name: p23 Rabbit Polyclonal Antibody
Catalog #: APRab00215



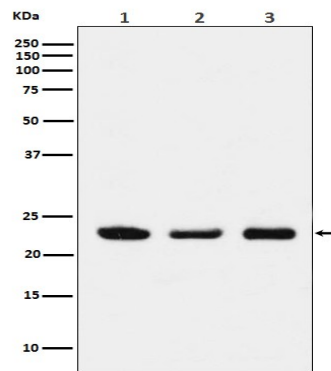
Background

Molecular chaperone that localizes to genomic response elements in a hormone-dependent manner and disrupts receptor-mediated transcriptional activation, by promoting disassembly of transcriptional regulatory complexes.

Research Area

Epigenetics and Nuclear Signaling

Image Data



Western blot analysis of p23 in (1) HeLa lysates; (2) NIH/3T3 lysates; (3) PC-12 lysates using p23 antibody.

Note

For research use only.