

Summary

Production Name	CDT1 Rabbit Polyclonal Antibody
Description	Primary antibody
Host	Rabbit
Application	WB,IHC-P,ICC/IF,IP
Reactivity	Human

Performance

Conjugation	Unconjugated
Modification	Unmodified
Isotype	IgG
Clonality	Polyclonal Antibody
Form	Liquid
Storage	Store at 4°C short term. Aliquot and store at -20°C long term. Avoid freeze/thaw cycles.
Buffer	Rabbit IgG in phosphate buffered saline , pH 7.4, 150mM NaCl, 0.02% sodium azide and 50% glycerol.
Purification	Affinity Chromatography

Immunogen

Gene Name	CDT1
Alternative Names	CDT 1; Chromatin licensing and DNA replication factor 1; Retroviral integration site 2; RIS2
Gene ID	81620
SwissProt ID	Q9H211

Application

Dilution Ratio	WB: 1/500-1/1000 IHC: 1/50-1/100 IF: 1/50-1/200 IP: 1/20
Molecular Weight	Calculated MW: 60 kDa; Observed MW: 60 kDa

Product Name: CDT1 Rabbit Polyclonal Antibody
Catalog #: APRab00212



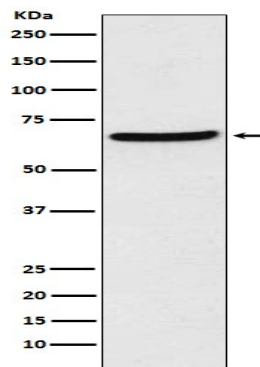
Background

Cooperates with CDC6 to promote the loading of the mini-chromosome maintenance complex onto chromatin to form the pre-replication complex necessary to initiate DNA replication. Binds DNA in a sequence-, strand-, and conformation-independent manner. Potential oncogene.

Research Area

Epigenetics and Nuclear Signaling

Image Data



Western blot analysis of CDT1 in HEK293 lysates using CDT1 antibody.

Note

For research use only.