

Summary

Production Name	FRS2 Rabbit Polyclonal Antibody
Description	Primary antibody
Host	Rabbit
Application	WB,FC,IP
Reactivity	Human

Performance

Conjugation	Unconjugated
Modification	Unmodified
Isotype	IgG
Clonality	Polyclonal Antibody
Form	Liquid
Storage	Store at 4°C short term. Aliquot and store at -20°C long term. Avoid freeze/thaw cycles.
Buffer	Rabbit IgG in phosphate buffered saline , pH 7.4, 150mM NaCl, 0.02% sodium azide and 50% glycerol.
Purification	Affinity Chromatography

Immunogen

Gene Name	FRS2
Alternative Names	Fibroblast growth factor receptor substrate 2; FGFR substrate 2; FGFR-signaling adaptor SNT; Suc1-associated neurotrophic factor target 1; SNT-1
Gene ID	10818
SwissProt ID	Q8WU20

Application

Dilution Ratio	WB: 1/500-1/1000 IP: 1/20 FC: 1/50-1/100
Molecular Weight	Calculated MW: 57 kDa; Observed MW: 57 kDa

Product Name: FRS2 Rabbit Polyclonal Antibody
Catalog #: APRab00210



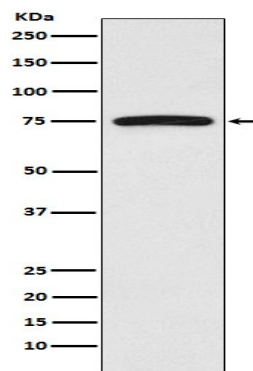
Background

Adapter protein that links FGR and NGF receptors to downstream signaling pathways. Involved in the activation of MAP kinases. Modulates signaling via SHC1 by competing for a common binding site on NTRK1.

Research Area

Signal Transduction

Image Data



Western blot analysis of FRS2 in HeLa lysates using FRS2 antibody.

Note

For research use only.