

Summary

| | |
|------------------------|---------------------------------------|
| Production Name | Calretinin Rabbit Polyclonal Antibody |
| Description | Primary antibody |
| Host | Rabbit |
| Application | WB,IHC-P,ICC/IF,FC |
| Reactivity | Human,Mouse,Rat |

Performance

| | |
|---------------------|--|
| Conjugation | Unconjugated |
| Modification | Unmodified |
| Isotype | IgG |
| Clonality | Polyclonal Antibody |
| Form | Liquid |
| Storage | Store at 4°C short term. Aliquot and store at -20°C long term. Avoid freeze/thaw cycles. |
| Buffer | Rabbit IgG in phosphate buffered saline , pH 7.4, 150mM NaCl, 0.02% sodium azide and 50% glycerol. |
| Purification | Affinity Chromatography |

Immunogen

| | |
|--------------------------|----------------------------------|
| Gene Name | CALB2 |
| Alternative Names | Calretinin; CR; 29 kDa calbindin |
| Gene ID | 794 |
| SwissProt ID | P22676 |

Application

| | |
|-------------------------|--|
| Dilution Ratio | WB: 1/500-1/1000 IHC: 1/50-1/100 IF: 1/50-1/200 FC: 1/50-1/100 |
| Molecular Weight | Calculated MW: 32 kDa; Observed MW: 29 kDa |

Background

Product Name: Calretinin Rabbit Polyclonal Antibody
Catalog #: APRab00206

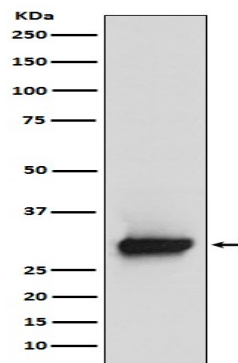


Calretinin is a calcium-binding protein which is abundant in auditory neurons.

Research Area

Tags & Cell Markers

Image Data



Western blot analysis of Calretinin in SH-SY5Y lysates using Calretinin antibody.

Note

For research use only.