

**Product Name: Parathyroid Hormone Rabbit Polyclonal Antibody**  
**Catalog #: APRab00203**

---

## Summary

<b>Production Name</b>	Parathyroid Hormone Rabbit Polyclonal Antibody
<b>Description</b>	Primary antibody
<b>Host</b>	Rabbit
<b>Application</b>	WB,IHC-P
<b>Reactivity</b>	Human

## Performance

<b>Conjugation</b>	Unconjugated
<b>Modification</b>	Unmodified
<b>Isotype</b>	IgG
<b>Clonality</b>	Polyclonal Antibody
<b>Form</b>	Liquid
<b>Storage</b>	Store at 4°C short term. Aliquot and store at -20°C long term. Avoid freeze/thaw cycles.
<b>Buffer</b>	Rabbit IgG in phosphate buffered saline , pH 7.4, 150mM NaCl, 0.02% sodium azide and 50% glycerol.
<b>Purification</b>	Affinity Chromatography

## Immunogen

<b>Gene Name</b>	PTH
<b>Alternative Names</b>	hPTH; Parathormone; Parathyrin; Parathyroid hormone 1; Prepro PTH; Preproparathyroid hormone; PTH1; PTH1 receptor; PTH1R; PTHR1
<b>Gene ID</b>	5741
<b>SwissProt ID</b>	P01270

## Application

<b>Dilution Ratio</b>	WB: 1/500-1/1000 IHC: 1/50-1/100
<b>Molecular Weight</b>	Calculated MW: 13 kDa; Observed MW: 36 kDa

**Product Name: Parathyroid Hormone Rabbit Polyclonal  
Antibody**  
**Catalog #: APRab00203**



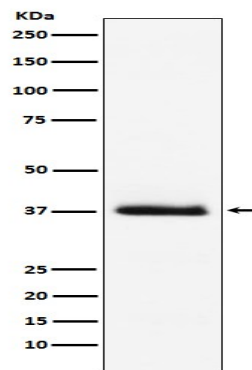
## Background

PTH elevates calcium level by dissolving the salts in bone and preventing their renal excretion. Stimulates [1-14C]-2-deoxy-D-glucose (2DG) transport and glycogen synthesis in osteoblastic cells.

## Research Area

Signal Transduction

## Image Data



Western blot analysis of Parathyroid Hormone in Human Parathyroid Hormone recombinant protein using Parathyroid Hormone antibody.

## Note

For research use only.