

Product Name: alpha B Crystallin Rabbit Polyclonal Antibody
Catalog #: APRab00197



Summary

Production Name	alpha B Crystallin Rabbit Polyclonal Antibody
Description	Primary antibody
Host	Rabbit
Application	WB,IHC-P,ICC/IF,IP
Reactivity	Human,Rat

Performance

Conjugation	Unconjugated
Modification	Unmodified
Isotype	IgG
Clonality	Polyclonal Antibody
Form	Liquid
Storage	Store at 4°C short term. Aliquot and store at -20°C long term. Avoid freeze/thaw cycles.
Buffer	Rabbit IgG in phosphate buffered saline , pH 7.4, 150mM NaCl, 0.02% sodium azide and 50% glycerol.
Purification	Affinity Chromatography

Immunogen

Gene Name	CRYAB
Alternative Names	CRYAB; CRYA2; Alpha-crystallin B chain; Alpha(B)-crystallin; Heat shock protein beta-5; HspB5; Renal carcinoma antigen NY-REN-27; Rosenthal fiber component
Gene ID	1410
SwissProt ID	P02511

Application

Dilution Ratio	WB: 1/500-1/1000 IHC: 1/50-1/100 IF: 1/50-1/200 IP: 1/20
Molecular Weight	Calculated MW: 20 kDa; Observed MW: 20 kDa

Product Name: alpha B Crystallin Rabbit Polyclonal Antibody
Catalog #: APRab00197



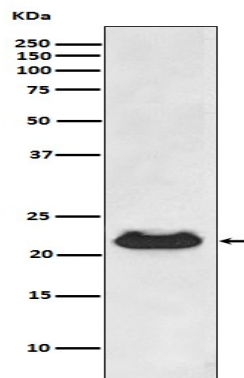
Background

May contribute to the transparency and refractive index of the lens.

Research Area

Signal Transduction

Image Data



Western blot analysis of CRYAB in Human fetal heart lysates using alpha B Crystallin antibody.

Note

For research use only.