

Summary

Production Name	GATA1 Rabbit Polyclonal Antibody
Description	Primary antibody
Host	Rabbit
Application	WB,IHC-P,ICC/IF,IP,ChIP
Reactivity	Human

Performance

Conjugation	Unconjugated
Modification	Unmodified
Isotype	IgG
Clonality	Polyclonal Antibody
Form	Liquid
Storage	Store at 4°C short term. Aliquot and store at -20°C long term. Avoid freeze/thaw cycles.
Buffer	Rabbit IgG in phosphate buffered saline , pH 7.4, 150mM NaCl, 0.02% sodium azide and 50% glycerol.
Purification	Affinity Chromatography

Immunogen

Gene Name	GATA1
Alternative Names	GATA1; ERYF1; GF1; Erythroid transcription factor; Eryf1; GATA-binding factor 1; GATA-1; GF-1; NF-E1 DNA-binding protein
Gene ID	2623
SwissProt ID	P15976

Application

Dilution Ratio	WB: 1/500-1/1000 IHC: 1/50-1/100 IF: 1/50-1/200 IP: 1/20 ChIP: 1/20
Molecular Weight	Calculated MW: 43 kDa; Observed MW: 43 kDa

Product Name: GATA1 Rabbit Polyclonal Antibody
Catalog #: APRab00189



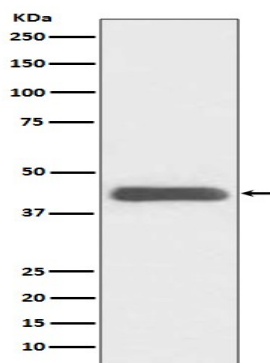
Background

GATA-1 is the founding member of the GATA family and is required for erythroid and megakaryocytic cell development. Mutations in GATA-1 have been linked to many human diseases, including acute megakaryoblastic leukemia in Down syndrome children (DS-AMKL), X-linked thrombocytopenia, and gray platelet syndrome.

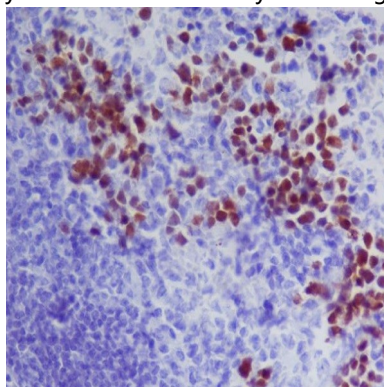
Research Area

Epigenetics and Nuclear Signaling

Image Data



Western blot analysis of GATA1 in K562 lysates using GATA1 antibody.



Immunohistochemistry analysis of paraffin-embedded mouse spleen using GATA1 antibody. High-pressure and temperature Sodium Citrate pH 6.0 was used for antigen retrieval.

Note

For research use only.