

Summary

Production Name	Calbindin Rabbit Polyclonal Antibody
Description	Primary antibody
Host	Rabbit
Application	WB,IHC-P,ICC/IF
Reactivity	Human,Mouse,Rat

Performance

Conjugation	Unconjugated
Modification	Unmodified
Isotype	IgG
Clonality	Polyclonal Antibody
Form	Liquid
Storage	Store at 4°C short term. Aliquot and store at -20°C long term. Avoid freeze/thaw cycles.
Buffer	Rabbit IgG in phosphate buffered saline , pH 7.4, 150mM NaCl, 0.02% sodium azide and 50% glycerol.
Purification	Affinity Chromatography

Immunogen

Gene Name	CALB1
Alternative Names	avian-type; CAB27; CALB1; Calbindin 1 28kDa; Calbindin; D28K; RTVL H protein
Gene ID	793
SwissProt ID	P05937

Application

Dilution Ratio	WB: 1/500-1/1000 IHC: 1/50-1/100 IF: 1/50-1/200
Molecular Weight	Calculated MW: 30 kDa; Observed MW: 30 kDa

Background

Product Name: Calbindin Rabbit Polyclonal Antibody
Catalog #: APRab00164

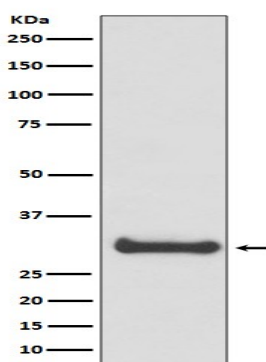


Buffers cytosolic calcium. May stimulate a membrane Ca(2+)-ATPase and a 3',5'-cyclic nucleotide phosphodiesterase.

Research Area

Neuroscience

Image Data



Western blot analysis of Calbindin in Human fetal brain lysates using Calbindin antibody.

Note

For research use only.