

## Summary

<b>Production Name</b>	BMP11 Rabbit Polyclonal Antibody
<b>Description</b>	Primary antibody
<b>Host</b>	Rabbit
<b>Application</b>	WB,IHC-P,ICC/IF
<b>Reactivity</b>	Human,Rat

## Performance

<b>Conjugation</b>	Unconjugated
<b>Modification</b>	Unmodified
<b>Isotype</b>	IgG
<b>Clonality</b>	Polyclonal Antibody
<b>Form</b>	Liquid
<b>Storage</b>	Store at 4°C short term. Aliquot and store at -20°C long term. Avoid freeze/thaw cycles.
<b>Buffer</b>	Rabbit IgG in phosphate buffered saline , pH 7.4, 150mM NaCl, 0.02% sodium azide and 50% glycerol.
<b>Purification</b>	Affinity Chromatography

## Immunogen

<b>Gene Name</b>	GDF11
<b>Alternative Names</b>	GDF11; BMP11; Bone morphogenetic protein 11; GDF-11; BMP-11
<b>Gene ID</b>	10220
<b>SwissProt ID</b>	O95390

## Application

<b>Dilution Ratio</b>	WB: 1/500-1/1000 IHC: 1/50-1/100 IF: 1/50-1/200
<b>Molecular Weight</b>	Calculated MW: 45 kDa; Observed MW: 45 kDa

## Background

**Product Name: BMP11 Rabbit Polyclonal Antibody**  
**Catalog #: APRab00148**

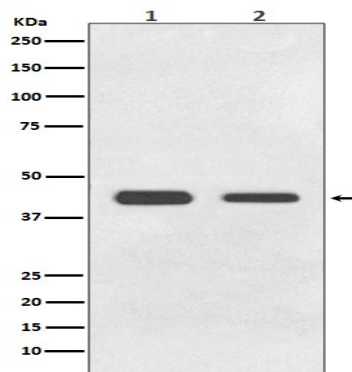


Secreted signal that acts globally to specify positional identity along the anterior/posterior axis during development. Play critical roles in patterning both mesodermal and neural tissues and in establishing the skeletal pattern.

## Research Area

Signal Transduction

## Image Data



Western blot analysis of BMP11 in (1) HeLa lysates; (2) C6 lysates using BMP11 antibody.

## Note

For research use only.