

Product Name: Insulin Degrading Enzyme Rabbit Polyclonal Antibody
Catalog #: APRab00144

Summary

Production Name	Insulin Degrading Enzyme Rabbit Polyclonal Antibody
Description	Primary antibody
Host	Rabbit
Application	WB,IHC-P
Reactivity	Human,Mouse,Rat

Performance

Conjugation	Unconjugated
Modification	Unmodified
Isotype	IgG
Clonality	Polyclonal Antibody
Form	Liquid
Storage	Store at 4°C short term. Aliquot and store at -20°C long term. Avoid freeze/thaw cycles.
Buffer	Rabbit IgG in phosphate buffered saline , pH 7.4, 150mM NaCl, 0.02% sodium azide and 50% glycerol.
Purification	Affinity Chromatography

Immunogen

Gene Name	IDE
Alternative Names	INSULYSIN; Insulin degrading enzyme; IDE
Gene ID	3416
SwissProt ID	P14735

Application

Dilution Ratio	WB: 1/500-1/1000 IHC: 1/50-1/100
Molecular Weight	Calculated MW: 118 kDa; Observed MW: 118 kDa

**Product Name: Insulin Degrading Enzyme Rabbit
Polyclonal Antibody
Catalog #: APRab00144**

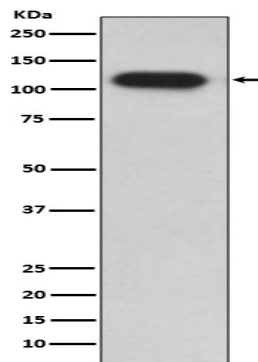
Background

This gene encodes a zinc metallopeptidase that degrades intracellular insulin, and thereby terminates insulin's activity, as well as participating in intercellular peptide signalling by degrading diverse peptides such as glucagon, amylin, bradykinin, and kallidin. The preferential affinity of this enzyme for insulin results in insulin-mediated inhibition of the degradation of other peptides such as beta-amyloid.

Research Area

Neuroscience

Image Data



Western blot analysis of IDE in HepG2 lysates using Insulin Degrading Enzyme antibody.

Note

For research use only.