

**Product Name: Glutathione Peroxidase 1 Rabbit  
Polyclonal Antibody  
Catalog #: APRab00143**

---

## Summary

<b>Production Name</b>	Glutathione Peroxidase 1 Rabbit Polyclonal Antibody
<b>Description</b>	Primary antibody
<b>Host</b>	Rabbit
<b>Application</b>	WB,IHC-P,ICC/IF,IP
<b>Reactivity</b>	Human,Rat

## Performance

<b>Conjugation</b>	Unconjugated
<b>Modification</b>	Unmodified
<b>Isotype</b>	IgG
<b>Clonality</b>	Polyclonal Antibody
<b>Form</b>	Liquid
<b>Storage</b>	Store at 4°C short term. Aliquot and store at -20°C long term. Avoid freeze/thaw cycles.
<b>Buffer</b>	Rabbit IgG in phosphate buffered saline , pH 7.4, 150mM NaCl, 0.02% sodium azide and 50% glycerol.
<b>Purification</b>	Affinity Chromatography

## Immunogen

<b>Gene Name</b>	GPX1
<b>Alternative Names</b>	GPX1; GSHPX1; MGC14399; MGC88245; Glutathione Peroxidase 1
<b>Gene ID</b>	2876
<b>SwissProt ID</b>	P07203

## Application

<b>Dilution Ratio</b>	WB: 1/500-1/1000 IHC: 1/50-1/100 IF: 1/50-1/200 IP: 1/20
<b>Molecular Weight</b>	Calculated MW: 22 kDa; Observed MW: 22 kDa

**Product Name: Glutathione Peroxidase 1 Rabbit  
Polyclonal Antibody  
Catalog #: APRab00143**

---

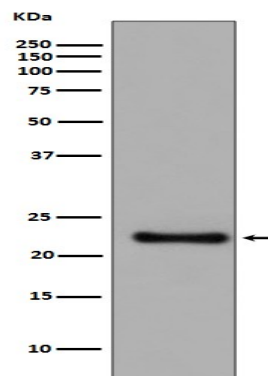
## Background

Glutathione peroxidase 1 (GPX1) is a cytosolic selenoprotein which reduces hydrogen peroxide to water. GPX1 is the most abundant and ubiquitous among the five GPX isoforms identified so far. It is an important component in the anti-oxidative defense in cells and is associated with a variety of disease conditions, such as colon cancer, coronary artery disease and insulin resistance.

## Research Area

Signal Transduction

## Image Data



Western blot analysis of GPX1 in SH SY5Y lysates using Glutathione Peroxidase 1 antibody.

## Note

For research use only.