

Summary

Production Name	E2F1 Rabbit Polyclonal Antibody
Description	Primary antibody
Host	Rabbit
Application	WB,IHC-P,ICC/IF,FC,IP
Reactivity	Human,Mouse,Rat

Performance

Conjugation	Unconjugated
Modification	Unmodified
Isotype	IgG
Clonality	Polyclonal Antibody
Form	Liquid
Storage	Store at 4°C short term. Aliquot and store at -20°C long term. Avoid freeze/thaw cycles.
Buffer	Rabbit IgG in phosphate buffered saline , pH 7.4, 150mM NaCl, 0.02% sodium azide and 50% glycerol.
Purification	Affinity Chromatography

Immunogen

Gene Name	E2F1 E2F1; RBBP3; Transcription factor E2F1; E2F-1; PBR3; Retinoblastoma-associated protein 1; RBAP-1; Retinoblastoma-binding protein 3; RBBP-3; pRB-binding protein
Alternative Names	E2F-1
Gene ID	1869
SwissProt ID	Q01094

Application

Dilution Ratio	WB: 1/500-1/1000 IHC: 1/50-1/100 IF: 1/50-1/200 IP: 1/20 FC: 1/50-1/100
-----------------------	---

Product Name: E2F1 Rabbit Polyclonal Antibody
Catalog #: APRab00139



Molecular Weight

Calculated MW: 47 kDa; Observed MW: 65 kDa

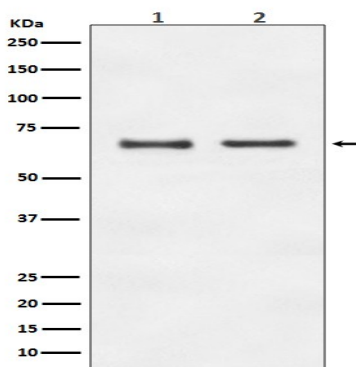
Background

The protein encoded by this gene is a member of the E2F family of transcription factors. The E2F family plays a crucial role in the control of cell cycle and action of tumor suppressor proteins and is also a target of the transforming proteins of small DNA tumor viruses.

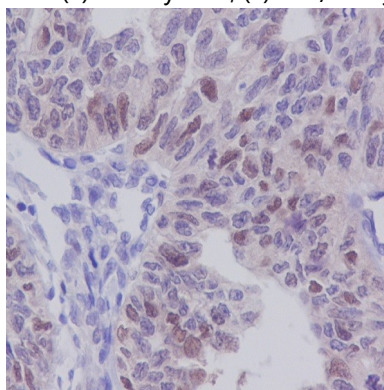
Research Area

Epigenetics and Nuclear Signaling

Image Data

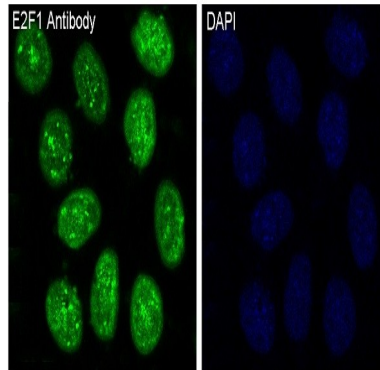


Western blot analysis of E2F1 in (1) HeLa lysates; (2) NIH/3T3 lysates using E2F1 antibody.



Immunohistochemistry analysis of paraffin-embedded Human ovary carcinoma using E2F1 antibody. High-pressure and temperature Sodium Citrate pH 6.0 was used for antigen retrieval.

Product Name: E2F1 Rabbit Polyclonal Antibody
Catalog #: APRab00139



Immunofluorescence analysis of E2F1 in HeLa using E2F1 antibody.

Note

For research use only.