

**Product Name: Metabotropic Glutamate Receptor 2  
Rabbit Polyclonal Antibody  
Catalog #: APRab00138**

---

## Summary

<b>Production Name</b>	Metabotropic Glutamate Receptor 2 Rabbit Polyclonal Antibody
<b>Description</b>	Primary antibody
<b>Host</b>	Rabbit
<b>Application</b>	WB,IHC-P,ICC/IF
<b>Reactivity</b>	Human,Mouse,Rat

## Performance

<b>Conjugation</b>	Unconjugated
<b>Modification</b>	Unmodified
<b>Isotype</b>	IgG
<b>Clonality</b>	Polyclonal Antibody
<b>Form</b>	Liquid
<b>Storage</b>	Store at 4°C short term. Aliquot and store at -20°C long term. Avoid freeze/thaw cycles.
<b>Buffer</b>	Rabbit IgG in phosphate buffered saline , pH 7.4, 150mM NaCl, 0.02% sodium azide and 50% glycerol.
<b>Purification</b>	Affinity Chromatography

## Immunogen

<b>Gene Name</b>	GRM2
<b>Alternative Names</b>	GRM2; GPRC1B; MGLUR2; Metabotropic glutamate receptor 2; mGluR2; GRM3; GPRC1C; MGLUR3; Metabotropic glutamate receptor 3; mGluR3
<b>Gene ID</b>	2912
<b>SwissProt ID</b>	Q14416

## Application

<b>Dilution Ratio</b>	WB: 1/500-1/1000 IHC: 1/50-1/100 IF: 1/50-1/200
<b>Molecular Weight</b>	Calculated MW: 96 kDa; Observed MW: 95,200 kDa

**Product Name: Metabotropic Glutamate Receptor 2  
Rabbit Polyclonal Antibody  
Catalog #: APRab00138**

---



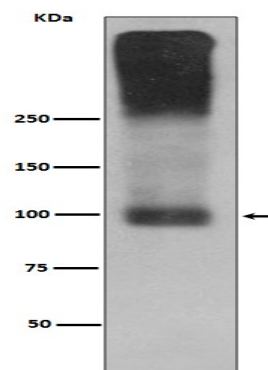
## Background

G-protein coupled receptor for glutamate. Ligand binding causes a conformation change that triggers signaling via guanine nucleotide-binding proteins (G proteins) and modulates the activity of down-stream effectors, such as adenylate cyclase. Signaling inhibits adenylate cyclase activity. May mediate suppression of neurotransmission or may be involved in synaptogenesis or synaptic stabilization.

## Research Area

Neuroscience

## Image Data



Western blot analysis of mGluR2 in mouse brain lysates using Metabotropic Glutamate Receptor 2 antibody.

## Note

For research use only.