

Summary

Production Name	14-3-3 Rabbit Polyclonal Antibody
Description	Primary antibody
Host	Rabbit
Application	WB,IHC-P,FC
Reactivity	Human,Mouse,Rat

Performance

Conjugation	Unconjugated
Modification	Unmodified
Isotype	IgG
Clonality	Polyclonal Antibody
Form	Liquid
Storage	Store at 4°C short term. Aliquot and store at -20°C long term. Avoid freeze/thaw cycles.
Buffer	Rabbit IgG in phosphate buffered saline , pH 7.4, 150mM NaCl, 0.02% sodium azide and 50% glycerol.
Purification	Affinity Chromatography

Immunogen

Gene Name	YWHAB/YWHAZ
Alternative Names	YWHAZ; 14-3-3 protein zeta/delta; Protein kinase C inhibitor protein 1; KCIP-1; YWHAB; 14-3-3 protein beta/alpha; Protein 1054; Protein kinase C inhibitor protein 1; KCIP-1
Gene ID	7529/7534
SwissProt ID	P31946/P63104

Application

Dilution Ratio	WB: 1/500-1/1000 IHC: 1/50-1/100 FC: 1/50-1/100
Molecular Weight	Calculated MW: 28 kDa; Observed MW: 28 kDa

Product Name: 14-3-3 Rabbit Polyclonal Antibody
Catalog #: APRab00121



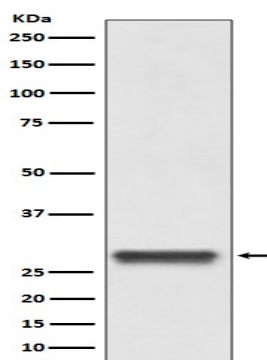
Background

Adapter protein implicated in the regulation of a large spectrum of both general and specialized signaling pathways. Binds to a large number of partners, usually by recognition of a phosphoserine or phosphothreonine motif. Binding generally results in the modulation of the activity of the binding partner. Negative regulator of osteogenesis.

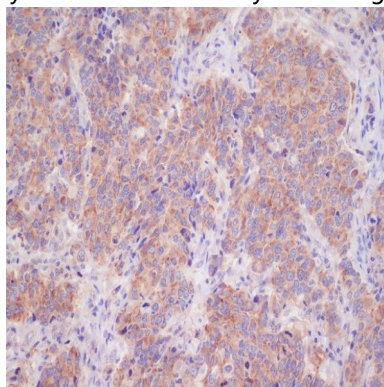
Research Area

Neuroscience

Image Data



Western blot analysis of 14-3-3 in HeLa lysates using 14-3-3 antibody.



Immunohistochemistry analysis of paraffin-embedded Human breast cancer using 14-3-3 antibody. High-pressure and temperature Sodium Citrate pH 6.0 was used for antigen retrieval.

Note

For research use only.