

## Summary

<b>Production Name</b>	MEK3 Rabbit Polyclonal Antibody
<b>Description</b>	Primary antibody
<b>Host</b>	Rabbit
<b>Application</b>	WB,IHC-P,ICC/IF,FC,IP
<b>Reactivity</b>	Human,Mouse,Rat

## Performance

<b>Conjugation</b>	Unconjugated
<b>Modification</b>	Unmodified
<b>Isotype</b>	IgG
<b>Clonality</b>	Polyclonal Antibody
<b>Form</b>	Liquid
<b>Storage</b>	Store at 4°C short term. Aliquot and store at -20°C long term. Avoid freeze/thaw cycles.
<b>Buffer</b>	Rabbit IgG in phosphate buffered saline , pH 7.4, 150mM NaCl, 0.02% sodium azide and 50% glycerol.
<b>Purification</b>	Affinity Chromatography

## Immunogen

<b>Gene Name</b>	MAP2K3 AW212142; dual specificity mitogen activated protein kinase kinase 3; Dual specificity mitogen activated protein kinase kinase 6; Dual specificity mitogen-activated protein kinase kinase 3; MAP kinase kinase 3; MAP kinase kinase 6; map2k3; MAP2K6; MAPK ERK kinase 3; MAPK/ERK kinase 3; MAPK/ERK kinase 6; MAPKK 3; MAPKK 6; MAPKK3; MAPKK6; MEK 3; MEK 6; MEK3; Mitogen activated protein kinase kinase 3; Mitogen activated protein kinase kinase 6; MKK 3; MKK3; MKK6; mMKK3b; MP2K3_HUMAN; PRKMK 3; PRKMK3; PRKMK6; Protein kinase; mitogen activated; kinase 6 (MAP kinase kinase 6); protein kinase; mitogen-activated; kinase 3; SAPK kinase 2; SAPKK 2; SAPKK 3; SAPKK-2; SAPKK2; SAPKK3; Stress activated protein kinase kinase 2; Stress activated protein kinase kinase 3; Stress-activated protein kinase kinase 2.
<b>Alternative Names</b>	
<b>Gene ID</b>	5606

**Product Name: MEK3 Rabbit Polyclonal Antibody**  
**Catalog #: APRab00114**



**SwissProt ID** P46734

## Application

**Dilution Ratio** WB: 1/500-1/1000 IHC: 1/50-1/100 IF: 1/50-1/200 IP: 1/20 FC: 1/50-1/100

**Molecular Weight** Calculated MW: 39 kDa; Observed MW: 39 kDa

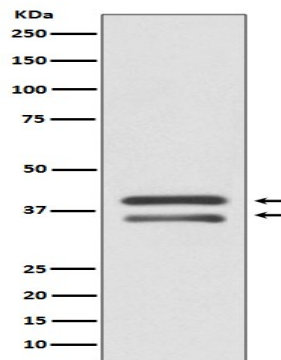
## Background

Dual specificity kinase. Is activated by cytokines and environmental stress in vivo. Catalyzes the concomitant phosphorylation of a threonine and a tyrosine residue in the MAP kinase p38.

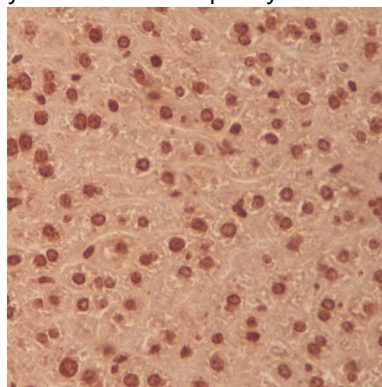
## Research Area

Signal Transduction

## Image Data



Western blot analysis of MEK3 in HepG2 lysates using MEK3 antibody.



Immunohistochemistry analysis of paraffin-embedded Human liver using MEK3 antibody. High-pressure and temperature

**Product Name: MEK3 Rabbit Polyclonal Antibody**  
**Catalog #: APRab00114**



---

Sodium Citrate pH 6.0 was used for antigen retrieval.

**Note**

For research use only.