
Summary

Production Name	Cyclin A1/A2 Rabbit Polyclonal Antibody
Description	Primary antibody
Host	Rabbit
Application	WB,IHC-P,IP
Reactivity	Human

Performance

Conjugation	Unconjugated
Modification	Unmodified
Isotype	IgG
Clonality	Polyclonal Antibody
Form	Liquid
Storage	Store at 4°C short term. Aliquot and store at -20°C long term. Avoid freeze/thaw cycles.
Buffer	Rabbit IgG in phosphate buffered saline , pH 7.4, 150mM NaCl, 0.02% sodium azide and 50% glycerol.
Purification	Affinity Chromatography

Immunogen

Gene Name	CCNA2/CCNA1
Alternative Names	CCN1; CCNA; CCNA1; CCNA2; CT146; Cyclin-A; Cyclin-A1; Cyclin-A2
Gene ID	890/8900
SwissProt ID	P20248/P78396

Application

Dilution Ratio	WB: 1/500-1/1000 IHC: 1/50-1/100 IP: 1/20
Molecular Weight	Calculated MW: 52,49 kDa; Observed MW: 52,49 kDa

Background

Product Name: Cyclin A1/A2 Rabbit Polyclonal Antibody
Catalog #: APRab00110

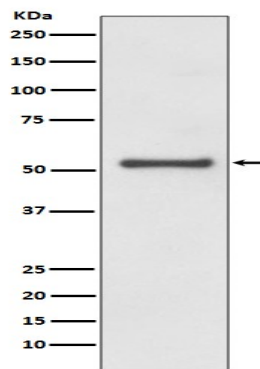


May primarily function in the control of the germline meiotic cell cycle and additionally in the control of mitotic cell cycle in some somatic cells. Essential for the control of the cell cycle at the G1/S (start) and the G2/M (mitosis) transitions.

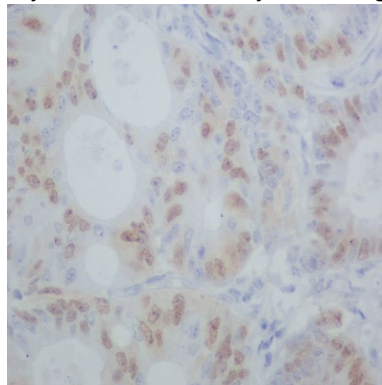
Research Area

Cell Biology

Image Data



Western blot analysis of Cyclin A1/A2 in HeLa lysates using Cyclin A1/A2 antibody.



Immunohistochemistry analysis of paraffin-embedded Human colon cancer using Cyclin A1/A2 antibody. High-pressure and temperature Sodium Citrate pH 6.0 was used for antigen retrieval.

Note

For research use only.