

Product Name: CDK6 Rabbit Polyclonal Antibody
Catalog #: APRab00109



Summary

Production Name	CDK6 Rabbit Polyclonal Antibody
Description	Primary antibody
Host	Rabbit
Application	WB,IHC-P,ICC/IF,FC
Reactivity	Human

Performance

Conjugation	Unconjugated
Modification	Unmodified
Isotype	IgG
Clonality	Polyclonal Antibody
Form	Liquid
Storage	Store at 4°C short term. Aliquot and store at -20°C long term. Avoid freeze/thaw cycles.
Buffer	Rabbit IgG in phosphate buffered saline , pH 7.4, 150mM NaCl, 0.02% sodium azide and 50% glycerol.
Purification	Affinity Chromatography

Immunogen

Gene Name	CDK6
Alternative Names	CDK 6; Cell division protein kinase 6; Crk 2; Cyclin dependent kinase 6; p40; PLSTIRE; STQTL11
Gene ID	1021
SwissProt ID	Q00534

Application

Dilution Ratio	WB: 1/500-1/1000 IHC: 1/50-1/100 IF: 1/50-1/200 FC: 1/50-1/100
Molecular Weight	Calculated MW: 37 kDa; Observed MW: 37 kDa

Product Name: CDK6 Rabbit Polyclonal Antibody
Catalog #: APRab00109



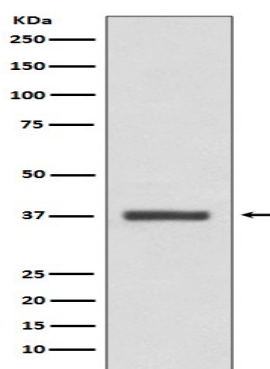
Background

The cyclin-dependent kinases form complexes with their cyclin partners and with CDK inhibitors. CDK6 and CDK4 associate with the D-type cyclins and target the retinoblastoma protein, allowing passage through the G1/S phase restriction point.

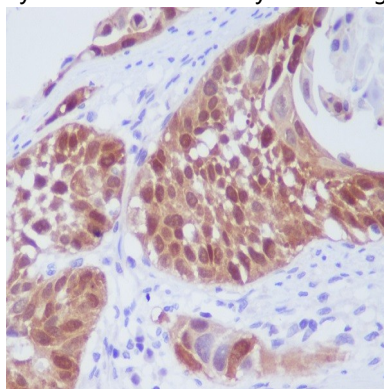
Research Area

Signal Transduction

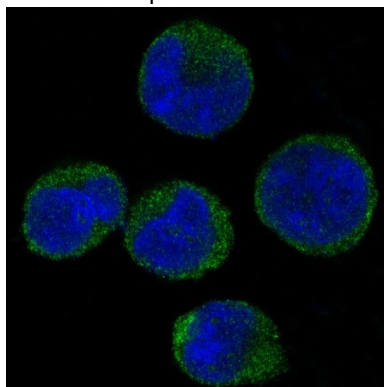
Image Data



Western blot analysis of CDK6 in HeLa lysates using CDK6 antibody.



Immunohistochemistry analysis of paraffin-embedded Human lung cancer using CDK6 antibody. High-pressure and temperature Sodium Citrate pH 6.0 was used for antigen retrieval.



Product Name: CDK6 Rabbit Polyclonal Antibody
Catalog #: APRab00109



Immunofluorescence analysis of CDK6 in K562 using CDK6 antibody.

Note

For research use only.